

Recombinant Human TRIM/TRAT1 Protein (His Tag)

Catalog Number: PKSH033097

Note: Centrifuge before opening to ensure complete recovery of vial contents.

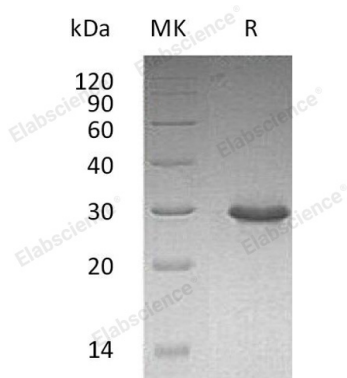
Description

Species	Human
Source	E.coli-derived Human TRIM;TRAT1 protein Asn29-Asn186, with an C-terminal His
Calculated MW	19.4 kDa
Observed MW	30 kDa
Accession	Q6PIZ9
Bio-activity	Not validated for activity

Properties

Purity	> 95 % as determined by reducing SDS-PAGE.
Concentration	Subject to label value.
Endotoxin	< 1.0 EU per µg of the protein as determined by the LAL method.
Storage	Store at < -20°C, stable for 6 months. Please minimize freeze-thaw cycles.
Shipping	This product is provided as liquid. It is shipped at frozen temperature with blue ice/gel packs. Upon receipt, store it immediately at < -20°C.
Formulation	Supplied as a 0.2 µm filtered solution of 20mM Tris-HCl, 150mM NaCl, 1mM EDTA, 20% Glycerol, pH8.0.

Data



> 95 % as determined by reducing SDS-PAGE.

Background

T-Cell Receptor-Associated Transmembrane Adapter 1 (TRAT1) is a single-pass type III membrane protein. TRAT1 exists as a disulfide-linked homodimer and is strongly expressed in the thymus, and to a lesser extent in the spleen, lymph node, and peripheral blood lymphocytes. TRAT1 is phosphorylated on tyrosines by LCK or FYN upon TCR activation. Its function is to stabilize the TCR (T-cell antigen receptor)/CD3 complex at the surface of T-cells.

For Research Use Only

Toll-free: 1-888-852-8623
Web: www.elabscience.com

Tel: 1-832-243-6086
Email: techsupport@elabscience.com

Fax: 1-832-243-6017