

GLUT-1 Polyclonal Antibody

catalog number: **E-AB-31556**

Note: Centrifuge before opening to ensure complete recovery of vial contents.

Description

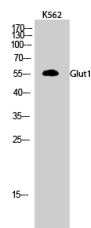
Reactivity	Human;Mouse;Rat
Immunogen	Synthesized peptide derived from the C-terminal region of human Glut1
Host	Rabbit
Isotype	IgG
Purification	Affinity purification
Buffer	Phosphate buffered solution, pH 7.4, containing 0.05% stabilizer, 0.5% protein protectant and 50% glycerol.

Applications

Recommended Dilution

WB	1:500-1:2000
IHC	1:100-1:300
IF	1:50-1:200

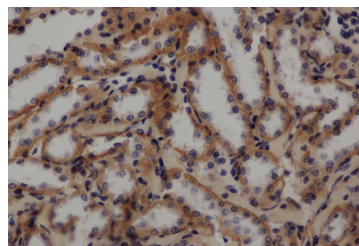
Data



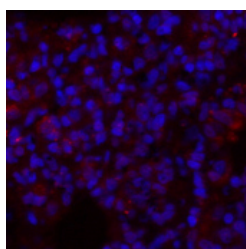
Western Blot analysis of K562 cells using GLUT-1 Polyclonal Antibody at dilution of 1:500.

Observed-MW:55 kDa

Calculated-MW:54 kDa



Immunohistochemistry of paraffin-embedded Rat kidney using GLUT-1 Polyclonal Antibody at dilution of 1:50



Immunofluorescence analysis of Rat lung tissue using GLUT-1 Polyclonal Antibody at dilution of 1:200.

Preparation & Storage

Storage	Store at -20°C Valid for 12 months. Avoid freeze / thaw cycles.
Shipping	The product is shipped with ice pack, upon receipt, store it immediately at the temperature recommended.

Background

For Research Use Only

This gene encodes a major glucose transporter in the mammalian blood-brain barrier. Mutations in this gene have been found in a family with paroxysmal exertion-induced dyskinesia. Facilitative glucose transporter. This isoform may be responsible for constitutive or basal glucose uptake. Has a very broad substrate specificity; can transport a wide range of aldoses including both pentoses and hexoses.

For Research Use Only

Toll-free: 1-888-852-8623
Web: www.elabscience.com

Tel: 1-832-243-6086
Email: techsupport@elabscience.com

Fax: 1-832-243-6017

Rev. V1.8