

## PPIB Monoclonal Antibody

catalog number: E-AB-22123

**Note:** Centrifuge before opening to ensure complete recovery of vial contents.

### Description

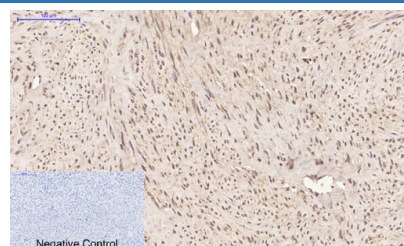
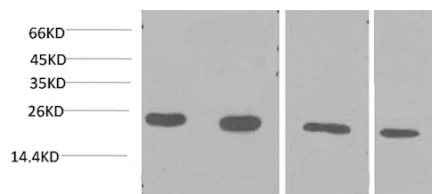
<b>Reactivity</b>	Human;Mouse;Rat
<b>Immunogen</b>	Synthetic Peptide
<b>Host</b>	Mouse
<b>Isotype</b>	IgG
<b>Clone</b>	4D7
<b>Purification</b>	Protein A purification
<b>Conjugation</b>	Unconjugated
<b>Buffer</b>	Phosphate buffered solution, pH 7.4, containing 0.05% stabilizer, 0.5% protein protectant and 50% glycerol.

### Applications

### Recommended Dilution

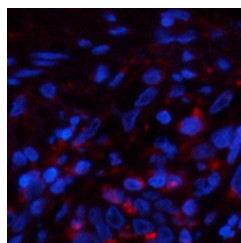
<b>WB</b>	1:1000-2000
<b>IHC</b>	1:50-300
<b>IF</b>	1:50-300

### Data



Western Blot analysis of 1) Jurkat, 2)293T, 3)Rat liver, 4)3T3 using PPIB Monoclonal Antibody at dilution of 1:2000. Immunohistochemistry of paraffin-embedded Human uterus tissue using PPIB Monoclonal Antibody at dilution of 1:200.

**Observed-MW:21 kDa**



Immunofluorescence analysis of Human lung tissue using PPIB Monoclonal Antibody at dilution of 1:200.

### Preparation & Storage

<b>Storage</b>	Store at -20°C Valid for 12 months. Avoid freeze / thaw cycles.
<b>Shipping</b>	The product is shipped with ice pack,upon receipt,store it immediately at the temperature recommended.

### Background

### For Research Use Only

The protein encoded by this gene is a cyclosporine-binding protein and is mainly located within the endoplasmic reticulum. It is associated with the secretory pathway and released in biological fluids. This protein can bind to cells derived from T- and B-lymphocytes, and may regulate cyclosporine A-mediated immunosuppression. Variants have been identified in this protein that give rise to recessive forms of osteogenesis imperfecta.