

Recombinant Human Interleukin-13/IL-13 Protein (Fc Tag)

Catalog Number: PKSH032457

Note: Centrifuge before opening to ensure complete recovery of vial contents.

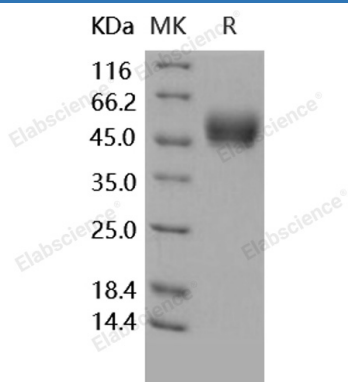
Description

Species	Human
Source	HEK293 Cells-derived Human Interleukin-13/IL-13 protein Gly 21-Asn 132, with an N-terminal hFc
Mol_Mass	39.0 kDa
Accession	AAK53823.1
Bio-activity	Immobilized recombinant human IL13RA2 at 8 µg/ml (100 µl/well) can bind IL13 with a linear range of 0.25-8.0 ng/ml.

Properties

Purity	> 98 % as determined by reducing SDS-PAGE.
Endotoxin	< 1.0 EU per µg of the protein as determined by the LAL method.
Storage	Generally, lyophilized proteins are stable for up to 12 months when stored at -20 to -80 °C. Reconstituted protein solution can be stored at 4-8°C for 2-7 days. Aliquots of reconstituted samples are stable at < -20°C for 3 months.
Shipping	This product is provided as lyophilized powder which is shipped with ice packs.
Formulation	Lyophilized from sterile PBS, pH 7.4 Normally 5% - 8% trehalose, mannitol and 0.01% Tween 80 are added as protectants before lyophilization. Please refer to the specific buffer information in the printed manual.
Reconstitution	Please refer to the printed manual for detailed information.

Data



> 98 % as determined by reducing SDS-PAGE.

Background

Interleukin 13 (IL-13) is a single-chain glycosylated polypeptide, which belongs to the IL-13/IL-4 family. IL-13 protein is secreted by many cell types, but especially by T helper type 2 (Th2) cells. IL-13 exerts its effects through a multi-subunit receptor comprising the alpha chain of the IL-4 receptor (IL-4Rα) and at least one of two known IL-13-specific binding chains (IL-13 Rα1 and IL-13 Rα2). As a cytokine, IL-13 protein is critical in regulating inflammatory, immune responses and diseases. In addition, it inhibits the production of pro-inflammatory cytokines and chemokines, and thus down-regulates macrophage activity. IL-13 protein and antibody is more importantly implicated as a central mediator of immunoregulatory processes in various cell types.

For Research Use Only