

MRPL9 Polyclonal Antibody

catalog number: E-AB-19209

Note: Centrifuge before opening to ensure complete recovery of vial contents.

Description

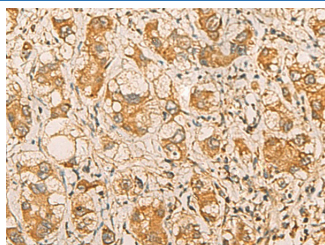
Reactivity	Human;Mouse;Rat
Immunogen	Fusion protein of human MRPL9
Host	Rabbit
Isotype	IgG
Purification	Antigen affinity purification
Conjugation	Unconjugated
Buffer	Phosphate buffered solution, pH 7.4, containing 0.05% stabilizer and 50% glycerol.

Applications

Recommended Dilution

IHC	1:50-1:200
-----	------------

Data



Immunohistochemistry of paraffin-embedded Human liver cancer tissue using MRPL9 Polyclonal Antibody at dilution of 1:55(×200)

Preparation & Storage

Storage	Store at -20°C Valid for 12 months. Avoid freeze / thaw cycles.
Shipping	The product is shipped with ice pack, upon receipt, store it immediately at the temperature recommended.

Background

This is a nuclear gene encoding a protein component of the 39S subunit of the mitochondrial ribosome. Alternative splicing results in multiple transcript variants. A pseudogene of this gene is found on chromosome 8. MRPL9 (Mitochondrial Ribosomal Protein L9) is a Protein Coding gene. Among its related pathways are Mitochondrial translation and Viral mRNA Translation. GO annotations related to this gene include poly(A) RNA binding and structural constituent of ribosome.