

## Recombinant Human NPY protein (GST Tag)

**Catalog Number:** PDEH100854

**Note:** Centrifuge before opening to ensure complete recovery of vial contents.

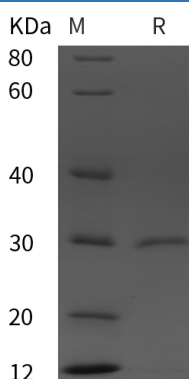
### Description

|                      |  |
|----------------------|--|
| <b>Species</b>       | Human  |
| <b>Source</b>        | E.coli-derived Human NPY protein Pro30-Trp97, with an N-terminal GST |
| <b>Calculated MW</b> | 32.4 kDa   |
| <b>Observed MW</b>   | 30 kDa   |
| <b>Accession</b>     | P01303   |
| <b>Bio-activity</b>  | Not validated for activity   |

### Properties

|                       |  |
|-----------------------|--|
| <b>Purity</b>         | > 95% as determined by reducing SDS-PAGE.  |
| <b>Endotoxin</b>      | < 10 EU/mg of the protein as determined by the LAL method  |
| <b>Storage</b>        | Generally, lyophilized proteins are stable for up to 12 months when stored at -20 to -80 °C. Reconstituted protein solution can be stored at 4-8°C for 2-7 days. Aliquots of reconstituted samples are stable at < -20°C for 3 months. |
| <b>Shipping</b>       | This product is provided as lyophilized powder which is shipped with ice packs.  |
| <b>Formulation</b>    | Lyophilized from a 0.2 µm filtered solution in PBS with 5% Trehalose and 5% Mannitol.  |
| <b>Reconstitution</b> | It is recommended that sterile water be added to the vial to prepare a stock solution of 0.5 mg/mL. Concentration is measured by UV-Vis.   |

### Data



> 95 % as determined by reducing SDS-PAGE.

### Background

Pro-Neuropeptide Y (NPY) is a member of the NPY family. NPY is a secreted protein and is one of the most abundant peptides in the nervous system. It also can be found in some chromaffin cells of the adrenal medulla. NPY can be cleaved into Neuropeptide Y and C-flanking peptide of NPY chain, which regulates energy usage, and it is involved in learning, memory processing, and epilepsy. NPY is implicated in the control of feeding and in secretion of gonadotrophin-release hormone. In addition, NPY increases the proportion of energy stored as fat and blocks nociceptive signals to the brain.

### For Research Use Only

Toll-free: 1-888-852-8623  
Web: [www.elabscience.com](http://www.elabscience.com)

Tel: 1-832-243-6086  
Email: [techsupport@elabscience.com](mailto:techsupport@elabscience.com)

Fax: 1-832-243-6017