

## Recombinant Human CXCL10 Protein

Catalog Number: PKSH032291

**Note:** Centrifuge before opening to ensure complete recovery of vial contents.

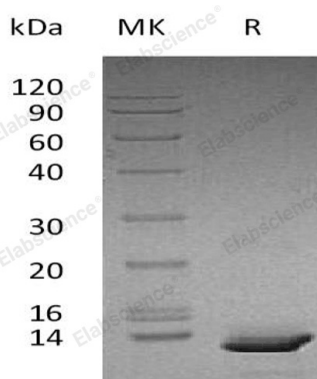
### Description

<b>Species</b>	Human
<b>Source</b>	E.coli-derived Human CXCL10 protein Val22-Pro98, with an N-terminal His
<b>Calculated MW</b>	9.5 kDa
<b>Observed MW</b>	15 kDa
<b>Accession</b>	P02778
<b>Bio-activity</b>	Measure by its ability to chemoattract human PBMCs using a concentration range of 10.0 - 100.0 ng/mL. Note: Results may vary from different PBMC donors.

### Properties

<b>Purity</b>	> 98 % as determined by reducing SDS-PAGE.
<b>Endotoxin</b>	< 0.1 EU per µg of the protein as determined by the LAL method.
<b>Storage</b>	Generally, lyophilized proteins are stable for up to 12 months when stored at -20 to -80 °C. Reconstituted protein solution can be stored at 4-8°C for 2-7 days. Aliquots of reconstituted samples are stable at < -20°C for 3 months.
<b>Shipping</b>	This product is provided as lyophilized powder which is shipped with ice packs.
<b>Formulation</b>	Lyophilized from sterile PBS, pH 7.4. Normally 5% - 8% trehalose, mannitol and 0.01% Tween 80 are added as protectants before lyophilization. Please refer to the specific buffer information in the printed manual.
<b>Reconstitution</b>	Please refer to the printed manual for detailed information.

### Data



> 98 % as determined by reducing SDS-PAGE.

### Background

Human C-X-C Motif Chemokine Ligand 10 (CXCL10) is a non-ELR chemokine secreted by various cell types; such as monocytes; endothelial cells and fibroblasts; in response to IFN- $\gamma$ . CXCL10 functions via chemokine receptor CXCR3. CXCL10 has been attributed to several roles; such as chemoattraction for activated T-lymphocytes; inhibition of angiogenesis; and antitumor activity.

### For Research Use Only