

CD146/MCAM Polyclonal Antibody

catalog number: **E-AB-92375**

Note: Centrifuge before opening to ensure complete recovery of vial contents.

Description

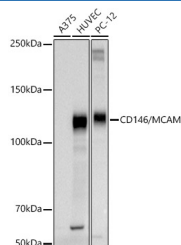
Reactivity	Human; Rat
Immunogen	Recombinant fusion protein of human CD146/MCAM
Host	Rabbit
Isotype	IgG
Purification	Affinity purification
Buffer	Phosphate buffered solution, pH 7.4, containing 0.05% stabilizer and 50% glycerol.

Applications

Recommended Dilution

WB	1:500-1:2000
-----------	--------------

Data



Western blot analysis of extracts of various cell lines using CD146/MCAM Polyclonal Antibody at 1:1000 dilution.

Observed-MV:120 kDa

Calculated-MV:57 kDa/71 kDa

Preparation & Storage

Storage	Store at -20°C Valid for 12 months. Avoid freeze / thaw cycles.
Shipping	The product is shipped with ice pack, upon receipt, store it immediately at the temperature recommended.

Background

Plays a role in cell adhesion, and in cohesion of the endothelial monolayer at intercellular junctions in vascular tissue. Its expression may allow melanoma cells to interact with cellular elements of the vascular system, thereby enhancing hematogeneous tumor spread. Could be an adhesion molecule active in neural crest cells during embryonic development. Acts as surface receptor that triggers tyrosine phosphorylation of FYN and PTK2/FAK1, and a transient increase in the intracellular calcium concentration.

For Research Use Only