

OCM2 Polyclonal Antibody

catalog number: E-AB-91522

Note: Centrifuge before opening to ensure complete recovery of vial contents.

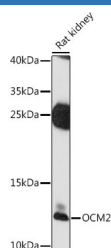
Description

Reactivity	Rat
Immunogen	Recombinant fusion protein of human OCM2
Host	Rabbit
Isotype	IgG
Purification	Affinity purification
Buffer	Phosphate buffered solution, pH 7.4, containing 0.05% stabilizer and 50% glycerol.

Applications Recommended Dilution

WB	1:500-1:2000
-----------	--------------

Data



Western blot analysis of extracts of rat kidney using OCM2
Polyclonal Antibody at 1:1000 dilution.

Observed-MW:12 kDa

Calculated-MW:12 kDa

Preparation & Storage

Storage	Store at -20°C Valid for 12 months. Avoid freeze / thaw cycles.
Shipping	The product is shipped with ice pack, upon receipt, store it immediately at the temperature recommended.

Background

This gene is similar to the oncomodulin gene, a high-affinity calcium ion-binding protein that belongs to the superfamily of calmodulin proteins, also known as the EF-hand proteins.

For Research Use Only