

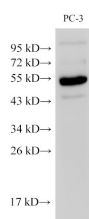
## Chromogranin A Polyclonal Antibody

catalog number: E-AB-40339

**Note:** Centrifuge before opening to ensure complete recovery of vial contents.

Description	
Reactivity	Human;Mouse
Immunogen	Recombinant Mouse Chromogranin-A protein
Host	Rabbit
Isotype	IgG
Purification	Antigen Affinity Purification
Conjugation	Unconjugated
Buffer	PBS with 0.05% Proclin300, 1% protective protein and 50% glycerol, pH7.4
Applications	Recommended Dilution
WB	1:500-1:1000
IHC	1:100-1:300

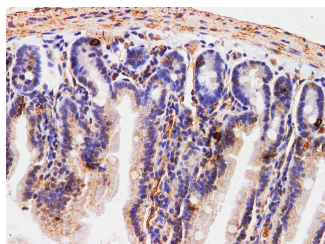
## Data



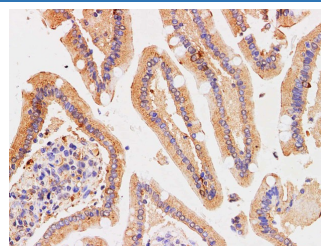
Western Blot analysis of PC-3 cells using Chromogranin A Polyclonal Antibody at dilution of 1:500

**Observed-MW:51 kDa**

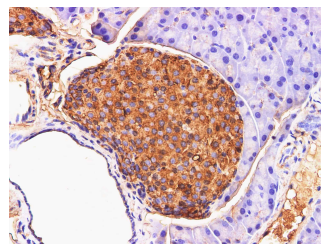
**Calculated-MW:51 kDa**



Immunohistochemistry of paraffin-embedded Mouse small intestine using Chromogranin A Polyclonal Antibody at dilution of 1:200



Immunohistochemistry of paraffin-embedded Human duodenum using Chromogranin A Polyclonal Antibody at dilution of 1:200



Immunohistochemistry of paraffin-embedded Mouse pancreas using Chromogranin A Polyclonal Antibody at dilution of 1:200

## Preparation & Storage

<b>Storage</b>	Store at -20°C Valid for 12 months. Avoid freeze / thaw cycles.
<b>Shipping</b>	The product is shipped with ice pack, upon receipt, store it immediately at the temperature recommended.

## Background

Chromogranin A is a member of the granin family of neuroendocrine secretory proteins. It is located in secretory vesicles of neurons and endocrine cells. Chromogranin A is the precursor to several functional peptides including vasostatin, pancreastatin, catestatin and parastatin. These peptides negatively modulate the neuroendocrine function of the releasing cell (autocrine) or nearby cells (paracrine). CgA is one of the most used tumor markers in NET's (neuroendocrine tumors), and elevated CgA concentrations have been demonstrated in serum or plasma of patients with different types of these tumors.