

CENPC Polyclonal Antibody

catalog number: E-AB-11073

Note: Centrifuge before opening to ensure complete recovery of vial contents.

Description

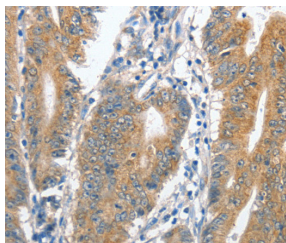
| | |
|--------------|--|
| Reactivity | Human |
| Immunogen | Recombinant protein of human CENPC |
| Host | Rabbit |
| Isotype | IgG |
| Purification | Affinity purification |
| Conjugation | Unconjugated |
| Buffer | Phosphate buffered solution, pH 7.4, containing 0.05% stabilizer and 50% glycerol. |

Applications

Recommended Dilution

| | |
|-----|------------|
| IHC | 1:50-1:200 |
|-----|------------|

Data



Immunohistochemistry of paraffin-embedded Human colon cancer tissue using CENPC Polyclonal Antibody at dilution 1:70

Preparation & Storage

| | |
|----------|--|
| Storage | Store at -20°C Valid for 12 months. Avoid freeze / thaw cycles. |
| Shipping | The product is shipped with ice pack, upon receipt, store it immediately at the temperature recommended. |

Background

Centromere protein C 1 is a centromere autoantigen and a component of the inner kinetochore plate. The protein is required for maintaining proper kinetochore size and a timely transition to anaphase. A putative pseudogene exists on chromosome 12. Component of the CENPA-NAC (nucleosome-associated) complex, a complex that plays a central role in assembly of kinetochore proteins, mitotic progression and chromosome segregation. The CENPA-NAC complex recruits the CENPA-CAD (nucleosome distal) complex and may be involved in incorporation of newly synthesized CENPA into centromeres.