

## Recombinant Human Cathepsin Z Protein (His Tag)

**Catalog Number:** PKSH033443

**Note:** Centrifuge before opening to ensure complete recovery of vial contents.

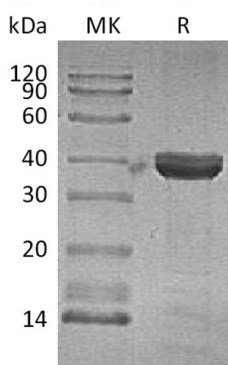
### Description

<b>Species</b>	Human
<b>Source</b>	HEK293 Cells-derived Human Cathepsin Z protein Gly24-Val303, with an C-terminal His
<b>Calculated MW</b>	32.5 kDa
<b>Observed MW</b>	37-40 kDa
<b>Accession</b>	Q9UBR2
<b>Bio-activity</b>	Not validated for activity

### Properties

<b>Purity</b>	> 95 % as determined by reducing SDS-PAGE.
<b>Concentration</b>	Subject to label value.
<b>Endotoxin</b>	< 1.0 EU per µg of the protein as determined by the LAL method.
<b>Storage</b>	Store at < -20°C, stable for 6 months. Please minimize freeze-thaw cycles.
<b>Shipping</b>	This product is provided as liquid. It is shipped at frozen temperature with blue ice/gel packs. Upon receipt, store it immediately at < - 20°C.
<b>Formulation</b>	Supplied as a 0.2 µm filtered solution of 4mM HCl.

### Data



> 95 % as determined by reducing SDS-PAGE.

### Background

Cathepsin Z is a lysosomal cysteine proteinase and belongs to the peptidase C1 family. Human Cathepsin Z contains a signal sequence; a propeptide and a mature chain. It exhibits both carboxy-monopeptidase and carboxy-dipeptidase activities. In contrast to cathepsin B; it does not act as an endopeptidase. Cathepsin Z is restricted to the cells of the immune system; predominantly monocytes; macrophages and dendritic cells. It is expressed ubiquitously in cancer cell lines and primary tumors. Like other members of this family; Cathepsin Z may be involved in tumorigenesis.

### For Research Use Only