

Recombinant Mouse TREM2 Protein (His Tag)

Catalog Number: PKSM041174

Note: Centrifuge before opening to ensure complete recovery of vial contents.

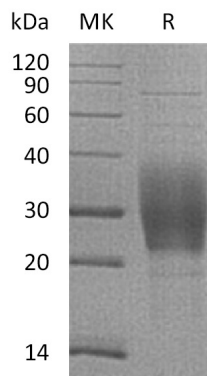
Description

Species	Mouse
Source	HEK293 Cells-derived Mouse TREM2 protein Leu19-Pro168 , with an C-terminal His
Calculated MW	17.3 kDa
Observed MW	25-40 kDa
Accession	Q99NH8
Bio-activity	Not validated for activity

Properties

Purity	> 95 % as determined by reducing SDS-PAGE.
Endotoxin	< 1.0 EU per µg of the protein as determined by the LAL method.
Storage	Generally, lyophilized proteins are stable for up to 12 months when stored at -20 to -80°C. Reconstituted protein solution can be stored at 4-8°C for 2-7 days. Aliquots of reconstituted samples are stable at < -20°C for 3 months.
Shipping	This product is provided as lyophilized powder which is shipped with ice packs.
Formulation	Lyophilized from a 0.2 µm filtered solution of PBS, pH 7.4. Normally 5% - 8% trehalose, mannitol and 0.01% Tween 80 are added as protectants before lyophilization. Please refer to the specific buffer information in the printed manual.
Reconstitution	Please refer to the printed manual for detailed information.

Data



Background

Triggering receptor expressed on myeloid cells-2 (TREM-2) is a cell surface receptor primarily expressed on macrophages, osteoclasts, microglia and dendritic cells. TREM-2 is one member of the TREM family, inhibiting the releasing of inflammatory mediators, so it is an important in vivo anti-inflammatory receptor. TREM-2 consists of an 18 aa signal sequence, a 153 aa extracellular domain (ECD) with one V-type Ig-like domain, a 21 aa transmembrane (TM) domain, and a 35 aa cytoplasmic tail. A soluble form of TREM-2 (TREM-2b) created by alternate splicing diverges at aa 161. TREM-2 transduces intracellular signals through the adaptor DAP12. After binding of TREM-2 with ligand, the TREM-2/DAP12 (dead-cell-activated-receptor-associated protein)-mediated signal transduction pathway causes a series of intracellular protein tyrosine phosphorylation reactions and enzymatic reactions, which then activate the myeloid cells and participate T cell responses.

For Research Use Only

Toll-free: 1-888-852-8623
Web: www.elabscience.com

Tel: 1-832-243-6086
Email: techsupport@elabscience.com

Fax: 1-832-243-6017