

## PAIP1 Polyclonal Antibody

**catalog number: E-AB-40457**

**Note:** Centrifuge before opening to ensure complete recovery of vial contents.

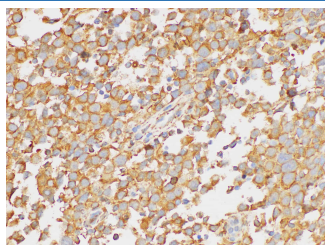
### Description

<b>Reactivity</b>	Human;Mouse;Rat
<b>Immunogen</b>	Recombinant Human Polyadenylate-binding protein-interacting protein 1 protein
<b>Host</b>	Rabbit
<b>Isotype</b>	IgG
<b>Purification</b>	Antigen Affinity Purification
<b>Buffer</b>	PBS with 0.05% proclin 300, 1% protective protein and 50% glycerol,pH7.4

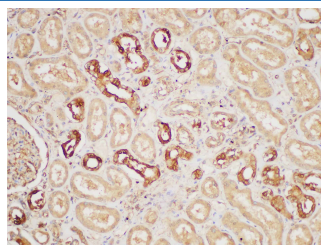
### Applications Recommended Dilution

<b>IHC</b>	1:100-1:300
------------	-------------

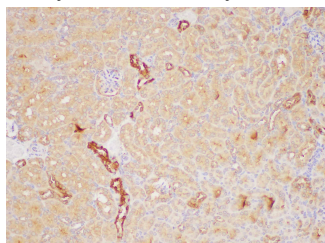
### Data



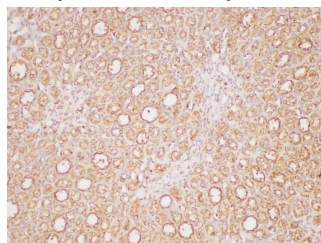
Immunohistochemistry of paraffin-embedded Human testis using PAIP1 Polyclonal Antibody at dilution of 1:200.



Immunohistochemistry of paraffin-embedded Human kidney using PAIP1 Polyclonal Antibody at dilution of 1:200.



Immunohistochemistry of paraffin-embedded Mouse kidney using PAIP1 Polyclonal Antibody at dilution of 1:200.



Immunohistochemistry of paraffin-embedded Rat kidney using PAIP1 Polyclonal Antibody at dilution of 1:200.

### Preparation & Storage

<b>Storage</b>	Store at -20°C Valid for 12 months. Avoid freeze / thaw cycles.
<b>Shipping</b>	The product is shipped with ice pack, upon receipt, store it immediately at the temperature recommended.

### Background

The protein encoded by this gene interacts with poly(A)-binding protein and with the cap-binding complex eIF4A. It is involved in translational initiation and protein biosynthesis. Among its related pathways are Deadenylation-dependent mRNA decay and Gene Expression. Overexpression of this gene in COS7 cells stimulates translation. Alternative splicing occurs at this locus and three transcript variants encoding three distinct isoforms have been identified. Gene Ontology (GO) annotations related to this gene include RNA binding and translation activator activity. An important paralog of this gene is CTIF.

### For Research Use Only