

## LYZL1 Polyclonal Antibody

**catalog number: E-AB-52843**

**Note:** Centrifuge before opening to ensure complete recovery of vial contents.

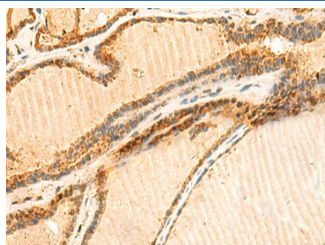
### Description

<b>Reactivity</b>	Human;Mouse
<b>Immunogen</b>	Fusion protein of human LYZL1
<b>Host</b>	Rabbit
<b>Isotype</b>	IgG
<b>Purification</b>	Antigen affinity purification
<b>Buffer</b>	Phosphate buffered solution, pH 7.4, containing 0.05% stabilizer and 50% glycerol.

### Applications Recommended Dilution

<b>IHC</b>	1:50-1:300
------------	------------

### Data



Immunohistochemistry of paraffin-embedded Human thyroid cancer tissue using LYZL1 Polyclonal Antibody at dilution of 1:50(×200)

### Preparation & Storage

<b>Storage</b>	Store at -20°C Valid for 12 months. Avoid freeze / thaw cycles.
<b>Shipping</b>	The product is shipped with ice pack, upon receipt, store it immediately at the temperature recommended.

### Background

The lysozyme family of proteins has an important role in host defense and is associated with the monocyte-macrophage system and enhances the activity of immunoagents. The mammalian lysozyme gene family is much larger than previously appreciated and consists of at least eight distinct genes scattered around the genome. C-type lysozymes are specifically involved catalyzing the hydrolysis of Beta-1,4 glycosidic bonds of the peptidoglycan of bacterial cell walls. As a homolog of human C-type lysozyme, LYZL1 is an intra-acrosomal, nonbacteriolytic, c lysozyme-like protein recently isolated from human spermatozoa.

### For Research Use Only