

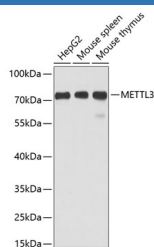
## METTL3 Polyclonal Antibody

catalog number: E-AB-63141

**Note:** Centrifuge before opening to ensure complete recovery of vial contents.

Description	
<b>Reactivity</b>	Human;Mouse;Rat
<b>Immunogen</b>	Recombinant fusion protein of human METTL3 (NP_062826.2).
<b>Host</b>	Rabbit
<b>Isotype</b>	IgG
<b>Purification</b>	Affinity purification
<b>Conjugation</b>	Unconjugated
<b>Buffer</b>	Phosphate buffered solution, pH 7.4, containing 0.05% stabilizer and 50% glycerol.
Applications	Recommended Dilution
WB	1:500-1:2000
IF	1:50-1:200

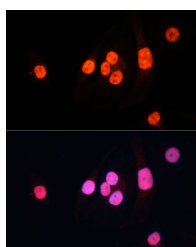
## Data



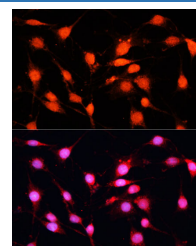
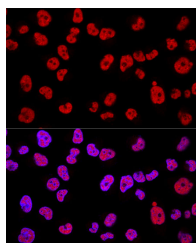
Western blot analysis of extracts of various cell lines using METTL3 Polyclonal Antibody at dilution of 1:1000.

**Observed-MW:80 kDa**

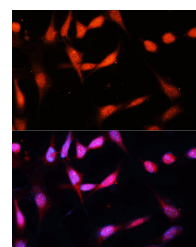
**Calculated-MW:25 kDa/64 kDa**



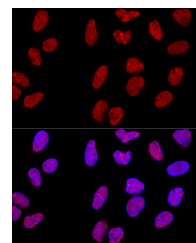
Immunofluorescence analysis of HeLa cells using METTL3 Polyclonal Antibody at dilution of 1:100 (40x lens). Blue: DAPI for nuclear staining.



Immunofluorescence analysis of C6 cells using METTL3 Polyclonal Antibody at dilution of 1:100 (40x lens). Blue: DAPI for nuclear staining.



Immunofluorescence analysis of NIH/3T3 cells using METTL3 Polyclonal Antibody at dilution of 1:100 (40x lens). Blue: DAPI for nuclear staining.



Confocal immunofluorescence analysis of Hela cells using METTL3 Polyclonal Antibody at dilution of 1:200. Blue: DAPI for nuclear staining.

Confocal immunofluorescence analysis of U-2 OS cells using METTL3 Polyclonal Antibody at dilution of 1:200. Blue: DAPI for nuclear staining.

## Preparation & Storage

**Storage**

Store at -20°C Valid for 12 months. Avoid freeze / thaw cycles.

**Shipping**

The product is shipped with ice pack, upon receipt, store it immediately at the temperature recommended.

## Background

This gene encodes the 70 kDa subunit of MT-A which is part of N6-adenosine-methyltransferase. This enzyme is involved in the posttranscriptional methylation of internal adenosine residues in eukaryotic mRNAs, forming N6-methyladenosine.