

## NPB Polyclonal Antibody

**catalog number: E-AB-91594**

**Note:** Centrifuge before opening to ensure complete recovery of vial contents.

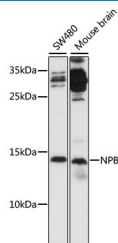
### Description

<b>Reactivity</b>	Human;Mouse
<b>Immunogen</b>	Recombinant fusion protein of human NPB
<b>Host</b>	Rabbit
<b>Isotype</b>	IgG
<b>Purification</b>	Affinity purification
<b>Buffer</b>	Phosphate buffered solution, pH 7.4, containing 0.05% stabilizer and 50% glycerol.

### Applications

Applications	Recommended Dilution
<b>WB</b>	1:500-1:2000
<b>IF</b>	1:50-1:200

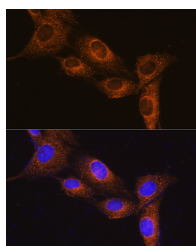
### Data



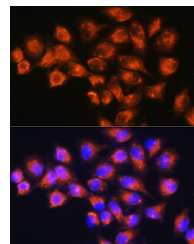
Western blot analysis of extracts of various cell lines using NPB Polyclonal Antibody at 1:1000 dilution.

**Observed-MW:13 kDa**

**Calculated-MW:13 kDa**



Immunofluorescence analysis of NIH/3T3 cells using NPB Polyclonal Antibody at dilution of 1:100. Blue: DAPI for nuclear staining.



Immunofluorescence analysis of HeLa cells using NPB Polyclonal Antibody at dilution of 1:100. Blue: DAPI for nuclear staining.

### Preparation & Storage

<b>Storage</b>	Store at -20°C Valid for 12 months. Avoid freeze / thaw cycles.
<b>Shipping</b>	The product is shipped with ice pack, upon receipt, store it immediately at the temperature recommended.

### Background

### For Research Use Only

This gene encodes a member of the neuropeptide B/W family of proteins and preproprotein that is proteolytically processed to generate multiple protein products. The encoded products include neuropeptide B-23 and a C-terminally extended form, neuropeptide B-29, which are characterized by an N-terminal brominated tryptophan amino acid. Both of the encoded peptides bind with higher affinity to neuropeptide B/W (NPB/W) receptor 1 compared to the related NPB/W receptor 2. These peptides may regulate feeding, pain perception, and stress in rodents.

## For Research Use Only

Toll-free: 1-888-852-8623  
Web: [www.elabscience.com](http://www.elabscience.com)

Tel: 1-832-243-6086  
Email: [techsupport@elabscience.com](mailto:techsupport@elabscience.com)

Fax: 1-832-243-6017

Rev. V1.7