

## TLE6 Polyclonal Antibody

catalog number: E-AB-52751

**Note:** Centrifuge before opening to ensure complete recovery of vial contents.

### Description

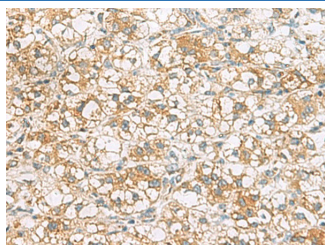
Reactivity	Human
Immunogen	Fusion protein of human TLE6
Host	Rabbit
Isotype	IgG
Purification	Antigen affinity purification
Conjugation	Unconjugated
Buffer	Phosphate buffered solution, pH 7.4, containing 0.05% stabilizer and 50% glycerol.

### Applications

### Recommended Dilution

IHC	1:50-1:200
-----	------------

### Data



Immunohistochemistry of paraffin-embedded Human liver cancer tissue using TLE6 Polyclonal Antibody at dilution of 1:75( $\times 200$ )

### Preparation & Storage

Storage	Store at -20°C Valid for 12 months. Avoid freeze / thaw cycles.
Shipping	The product is shipped with ice pack, upon receipt, store it immediately at the temperature recommended.

### Background

This gene encodes a member of the Groucho/ transducin-like Enhancer of split family of transcriptional co-repressors. The encoded protein is a component of the mammalian subcortical maternal complex, which is required for preimplantation development. In mouse, knock out of this gene results in cleavage-stage embryonic arrest resulting from defective cytoplasmic F-actin meshwork formation and asymmetric cell division. In human, an allelic variant in this gene is associated with preimplantation embryonic lethality. Alternative splicing results in multiple transcript variants.