

Recombinant Human SULT1E1/ST1E1 Protein (His Tag)

Catalog Number: PKSH031173

Note: Centrifuge before opening to ensure complete recovery of vial contents.

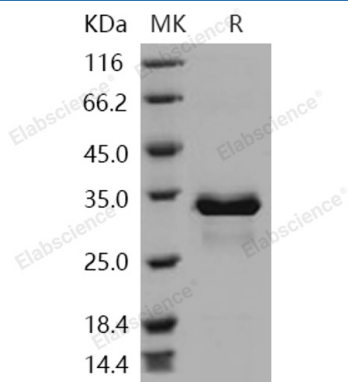
Description

Species	Human
Source	E.coli-derived Human SULT1E1/ST1E1 protein Asn 2-Ile 294, with an N-terminal His
Calculated MW	36.0 kDa
Observed MW	33 kDa
Accession	NP_005411.1
Bio-activity	Not validated for activity

Properties

Purity	> 92 % as determined by reducing SDS-PAGE.
Endotoxin	Please contact us for more information.
Storage	Generally, lyophilized proteins are stable for up to 12 months when stored at -20 to -80 °C. Reconstituted protein solution can be stored at 4-8°C for 2-7 days. Aliquots of reconstituted samples are stable at < -20°C for 3 months.
Shipping	This product is provided as lyophilized powder which is shipped with ice packs.
Formulation	Lyophilized from sterile 20mM Tris 0.5M NaCl, 20% glycerol, pH 8.0 Normally 5% - 8% trehalose, mannitol and 0.01% Tween 80 are added as protectants before lyophilization.
Reconstitution	Please refer to the specific buffer information in the printed manual. Please refer to the printed manual for detailed information.

Data



> 92 % as determined by reducing SDS-PAGE.

Background

For Research Use Only

Toll-free: 1-888-852-8623
Web: www.elabscience.com

Tel: 1-832-243-6086
Email: techsupport@elabscience.com

Fax: 1-832-243-6017

Rev. V3.6

Estrogen sulfotransferase, also known as Sulfotransferase, estrogen-preferring, Sulfotransferase 1E1, SULT1E1 and ST1E1, is a cytoplasmic enzyme which belongs to the sulfotransferase 1 family. Sulfotransferase enzymes catalyze the sulfate conjugation of many hormones, neurotransmitters, drugs, and xenobiotic compounds. These cytosolic enzymes are different in their tissue distributions and substrate specificities. SULT1E1 may control the level of the estrogen receptor by sulfurylating free estradiol. SULT1E1 maximally sulfates beta-estradiol and estrone at concentrations of 20 nM. SULT1E1 also sulfates dehydroepiandrosterone, pregnenolone, ethinylestradiol, equalenin, diethylstilbesterol and 1-naphthol, at significantly higher concentrations; however, cortisol, testosterone and dopamine are not sulfated. SULT1E1 is a key enzyme in estrogen homeostasis. It plays a central role in the prevention and development of human disease.