

Recombinant Human XPNPEP2 Protein (His Tag)

Catalog Number: PKSH033349

Note: Centrifuge before opening to ensure complete recovery of vial contents.

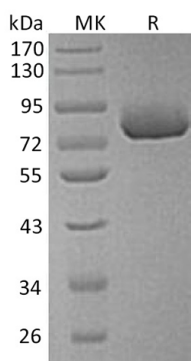
Description

Species	Human
Source	HEK293 Cells-derived Human XPNPEP2 protein His22-Ala650, with an C-terminal His
Calculated MW	71.6 kDa
Observed MW	78 kDa
Accession	O43895
Bio-activity	Not validated for activity

Properties

Purity	> 95 % as determined by reducing SDS-PAGE.
Concentration	Subject to label value.
Endotoxin	< 1.0 EU per µg of the protein as determined by the LAL method.
Storage	Store at < -20°C, stable for 6 months. Please minimize freeze-thaw cycles.
Shipping	This product is provided as liquid. It is shipped at frozen temperature with blue ice/gel packs. Upon receipt, store it immediately at < - 20°C.
Formulation	Supplied as a 0.2 µm filtered solution of 20mM Tris-HCl, 150mM NaCl, pH 8.0.

Data



> 95 % as determined by reducing SDS-PAGE.

Background

Xaa-Pro aminopeptidase 2 (XPNPEP2) belongs to the peptidase M24B family of metalloproteases. Human XPNPEP2 is widely expressed in various tissues; such as kidney; lung; heart; placenta; liver; small intestine and colon. However, it doesn't express in brain; skeletal muscle; pancreas; spleen; thymus; prostate; testis and ovary. XPNPEP2 is a Homotrimer which binds 2 manganese ions per subunit. The metalloprotease XPNPEP2 may play a role in the inflammatory process and other reactions produced in response to injury or infection and the metabolism of the vasodilator bradykinin.

For Research Use Only

Toll-free: 1-888-852-8623
Web: www.elabscience.com

Tel: 1-832-243-6086
Email: techsupport@elabscience.com

Fax: 1-832-243-6017