

## CLCA4 Polyclonal Antibody

catalog number: **E-AB-91844**

**Note:** Centrifuge before opening to ensure complete recovery of vial contents.

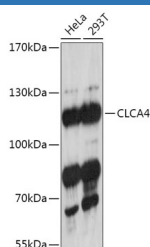
### Description

|                     |  |
|---------------------|--|
| <b>Reactivity</b>   | Human;Rat  |
| <b>Immunogen</b>    | Recombinant fusion protein of human CLCA4  |
| <b>Host</b>         | Rabbit   |
| <b>Isotype</b>      | IgG  |
| <b>Purification</b> | Affinity purification  |
| <b>Buffer</b>       | Phosphate buffered solution, pH 7.4, containing 0.05% stabilizer and 50% glycerol. |

### Applications Recommended Dilution

|           |              |
|-----------|--------------|
| <b>WB</b> | 1:500-1:2000 |
|-----------|--------------|

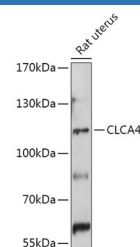
### Data



Western blot analysis of extracts of various cell lines using CLCA4 Polyclonal Antibody at 1:1000 dilution.

**Observed-MV:101 kDa**

**Calculated-MV:25 kDa/101 kDa**



Western blot analysis of extracts of Rat uterus using CLCA4 Polyclonal Antibody at 1:1000 dilution.

**Observed-MV:101 kDa**

**Calculated-MV:25 kDa/101 kDa**

### Preparation & Storage

|                 |  |
|-----------------|--|
| <b>Storage</b>  | Store at -20°C Valid for 12 months. Avoid freeze / thaw cycles.  |
| <b>Shipping</b> | The product is shipped with ice pack, upon receipt, store it immediately at the temperature recommended. |

### Background

The protein encoded by this gene belongs to the calcium sensitive chloride conductance protein family. To date, all members of this gene family map to the same site on chromosome 1p31-p22 and share high degrees of homology in size, sequence and predicted structure, but differ significantly in their tissue distributions. Alternative splicing results in multiple transcript variants, only one of which is thought to be protein coding. [provided by RefSeq, Dec 2008]

### For Research Use Only