

## ADGRA3 Polyclonal Antibody

**catalog number: E-AB-91212**

**Note:** Centrifuge before opening to ensure complete recovery of vial contents.

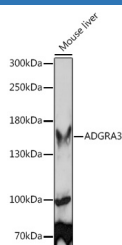
### Description

<b>Reactivity</b>	Mouse;Rat
<b>Immunogen</b>	Recombinant fusion protein of human ADGRA3
<b>Host</b>	Rabbit
<b>Isotype</b>	IgG
<b>Purification</b>	Affinity purification
<b>Buffer</b>	Phosphate buffered solution, pH 7.4, containing 0.05% stabilizer and 50% glycerol.

### Applications Recommended Dilution

<b>WB</b>	1:200-1:2000
-----------	--------------

### Data



Western blot analysis of extracts of Mouse liver using ADGRA3 Polyclonal Antibody at 1:1000 dilution.

**Observed-MW:146 kDa**

**Calculated-MW:42 kDa/68 kDa/131 kDa/146 kDa**

### Preparation & Storage

<b>Storage</b>	Store at -20°C Valid for 12 months. Avoid freeze / thaw cycles.
<b>Shipping</b>	The product is shipped with ice pack, upon receipt, store it immediately at the temperature recommended.

### Background

This gene encodes a member of the G protein-coupled receptor superfamily. This membrane protein may play a role in tumor angiogenesis through its interaction with the human homolog of the Drosophila disc large tumor suppressor gene. This gene is mapped to a candidate region of chromosome 4 which may be associated with bipolar disorder and schizophrenia.

### For Research Use Only