

## Recombinant Human Cytoglobin/CYGB Protein (His Tag)

**Catalog Number:** PKSH032337

**Note:** Centrifuge before opening to ensure complete recovery of vial contents.

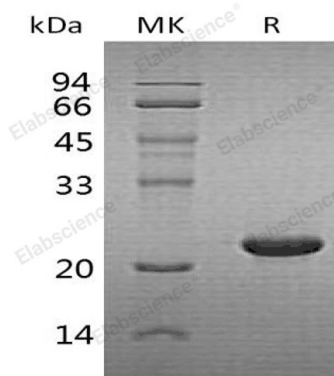
### Description

<b>Species</b>	Human
<b>Source</b>	E.coli-derived Human Cytoglobin;CYGB protein Met 1-Pro190, with an C-terminal His
<b>Calculated MW</b>	22.4 kDa
<b>Observed MW</b>	22 kDa
<b>Accession</b>	Q8WWM9
<b>Bio-activity</b>	Not validated for activity

### Properties

<b>Purity</b>	> 90 % as determined by reducing SDS-PAGE.
<b>Concentration</b>	Subject to label value.
<b>Endotoxin</b>	< 1.0 EU per µg of the protein as determined by the LAL method.
<b>Storage</b>	Store at < -20°C, stable for 6 months. Please minimize freeze-thaw cycles.
<b>Shipping</b>	This product is provided as liquid. It is shipped at frozen temperature with blue ice/gel packs. Upon receipt, store it immediately at < - 20°C.
<b>Formulation</b>	Supplied as a 0.2 µm filtered solution of 20mM Tris-HCl, 10% Glycerol, pH 8.0.

### Data



> 90 % as determined by reducing SDS-PAGE.

### Background

Cytoglobin is a ubiquitously globin protein that belongs to the globin family. The highest expressed in heart, stomach, bladder and small intestine. CYGB acts a protector under conditions of oxidative stress. CYGB may be involved in intracellular oxygen storage or transfer, modulates oxygen and nitric oxide metabolism or scavenging free radicals within a cell.

### For Research Use Only