

Recombinant Mouse CCL9/10/MIP-1 γ Protein(Sumo Tag)

Catalog Number: PDEM100193



Note: Centrifuge before opening to ensure complete recovery of vial contents.

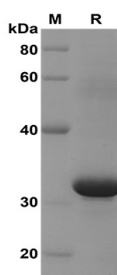
Description

| | |
|---------------------|---|
| Species | Mouse |
| Source | E.coli-derived Mouse CCL9/10/MIP-1 γ protein Gln22-Gln122, with an N-terminal Sumo |
| Mol_Mass | 24.0 kDa |
| Accession | P51670 |
| Bio-activity | Not validated for activity |

Properties

| | |
|-----------------------|--|
| Purity | > 90% as determined by reducing SDS-PAGE. |
| Endotoxin | < 10 EU/mg of the protein as determined by the LAL method |
| Storage | Generally, lyophilized proteins are stable for up to 12 months when stored at -20 to -80 °C. Reconstituted protein solution can be stored at 4-8°C for 2-7 days. Aliquots of reconstituted samples are stable at < -20°C for 3 months. |
| Shipping | This product is provided as lyophilized powder which is shipped with ice packs. |
| Formulation | Lyophilized from a 0.2 μ m filtered solution in PBS with 5% Trehalose and 5% Mannitol. |
| Reconstitution | It is recommended that sterile water be added to the vial to prepare a stock solution of 0.5 mg/mL. Concentration is measured by UV-Vis. |

Data



SDS-PAGE analysis of Mouse CCL9/10/MIP-1 γ proteins, 2 μ g/lane of Recombinant Mouse CCL9/10/MIP-1 γ proteins was resolved with SDS-PAGE under reducing conditions, showing bands at 32 KD

For Research Use Only

A Reliable Research Partner in Life Science and Medicine
Tel:400-999-2100

Email:techsupport@elabscience.cn

Web:www.elabscience.cn

Rev. V1.6