

## Recombinant Human BMPR2 Protein (Fc & His Tag)

**Catalog Number:** PKSH032121

**Note:** Centrifuge before opening to ensure complete recovery of vial contents.

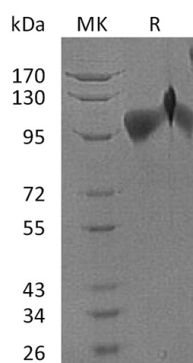
### Description

<b>Species</b>	Human
<b>Source</b>	HEK293 Cells-derived Human BMPR2 protein Ser27-Ile151, with an C-terminal Fc & His
<b>Calculated MW</b>	41.9 kDa
<b>Observed MW</b>	60-70 kDa
<b>Accession</b>	Q13873
<b>Bio-activity</b>	Not validated for activity

### Properties

<b>Purity</b>	> 95 % as determined by reducing SDS-PAGE.
<b>Endotoxin</b>	< 1.0 EU per µg of the protein as determined by the LAL method.
<b>Storage</b>	Generally, lyophilized proteins are stable for up to 12 months when stored at -20 to -80 °C. Reconstituted protein solution can be stored at 4-8°C for 2-7 days. Aliquots of reconstituted samples are stable at < -20°C for 3 months.
<b>Shipping</b>	This product is provided as lyophilized powder which is shipped with ice packs.
<b>Formulation</b>	Lyophilized from a 0.2 µm filtered solution of 20mM PB, 150mM NaCl, 5% Trehalose, 0.06% Tween 80, pH 7.4. Normally 5% - 8% trehalose, mannitol and 0.01% Tween 80 are added as protectants before lyophilization. Please refer to the specific buffer information in the printed manual.
<b>Reconstitution</b>	Please refer to the printed manual for detailed information.

### Data



> 95 % as determined by reducing SDS-PAGE.

### Background

Bone Morphogenetic Protein Receptor II (BMPR-II) is a Type II Serine/Threonine Kinase that mediates cellular responses to BMPs. BMPR-II is characterized by lacking of a GS domain, and presence of a C-terminal extension typical of type II receptors. BMPRII binds BMP2, BMP4 and BMP7 weakly in the absence of type I receptor, and the binding can be facilitated by the presence of the type I receptor, including BMPR-IA/Brk1, BMPR-IB, and ActR-I. BMPR-II plays a key role in cell growth. Defects in BMPR-II have been linked to primary pulmonary hypertension. Human and mouse BMPR-II are highly conserved and share 97 % amino acid sequence identity.

### For Research Use Only