

PLA2G3 Polyclonal Antibody

catalog number: E-AB-91870

Note: Centrifuge before opening to ensure complete recovery of vial contents.

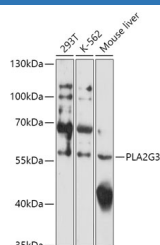
Description

Reactivity	Human;Mouse
Immunogen	A synthetic peptide of human PLA2G3
Host	Rabbit
Isotype	IgG
Purification	Affinity purification
Buffer	Phosphate buffered solution, pH 7.4, containing 0.05% stabilizer and 50% glycerol.

Applications Recommended Dilution

WB	1:500-1:2000
-----------	--------------

Data



Western blot analysis of extracts of various cell lines using PLA2G3 Polyclonal Antibody at 1:1000 dilution.

Observed-MW:57 kDa

Preparation & Storage

Storage	Store at -20°C Valid for 12 months. Avoid freeze / thaw cycles.
Shipping	The product is shipped with ice pack, upon receipt, store it immediately at the temperature recommended.

Background

This gene encodes a protein that belongs to the secreted phospholipase A2 family, whose members include the bee venom enzyme. The encoded enzyme functions in lipid metabolism and catalyzes the calcium-dependent hydrolysis of the sn-2 acyl bond of phospholipids to release arachidonic acid and lysophospholipids. This enzyme acts as a negative regulator of ciliogenesis, and may play a role in cancer development by stimulating tumor cell growth and angiogenesis. This gene is associated with oxidative stress, and polymorphisms in this gene are linked to risk for Alzheimer's disease. [provided by RefSeq, Apr 2014]

For Research Use Only