

## PE Anti-Human CD25 Antibody[CHI621]

Catalog Number: AN00360D

Note: Centrifuge before opening to ensure complete recovery of vial contents.

### Description

<b>Reactivity</b>	Human
<b>Host</b>	Mouse
<b>Isotype</b>	Mouse IgG1
<b>Clone No.</b>	CHI621
<b>Isotype Control</b>	PE Mouse IgG1, κ Isotype Control[MOPC-21] [Product E-AB-F09792D]
<b>Conjugation</b>	PE
<b>Conjugation Information</b>	PE is designed to be excited by the Blue (488 nm), Green (532 nm) and Yellow-Green (561 nm) lasers and detected using an optical filter centered near 575 nm (e.g., a 585/42 nm bandpass filter).
<b>Storage Buffer</b>	Phosphate buffered solution, pH 7.2, containing 0.09% stabilizer and 1% protein protectant

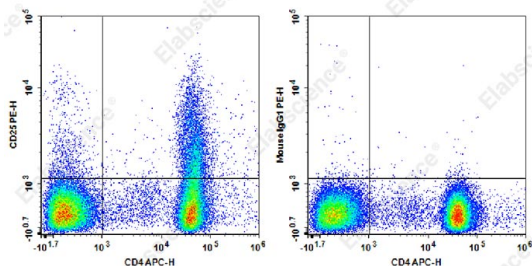
### Applications

### Recommended usage

#### FCM

Each lot of this antibody is quality control tested by flow cytometric analysis. **The amount of the reagent is suggested to be used 5 μL of antibody per test (million cells in 100 μL staining volume or per 100 μL of whole blood).** Please check your vial before the experiment. Since applications vary, the appropriate dilutions must be determined for individual use.

### Data



Staining of normal human peripheral blood cells with APC Anti-Human CD4 Antibody and PE Anti-Human CD25 Antibody[CHI621] (left) or PE Mouse IgG1, κ Isotype Control (right). Cells in the lymphocytes gate were used for analysis.

### Preparation & Storage

<b>Storage</b>	Keep as concentrated solution. This product can be stored at 2-8°C for 12 months. Please protected from prolonged exposure to light and do not freeze.
<b>Shipping</b>	Ice bag

### Antigen Information

<b>Alternate Names</b>	IL-2 receptor α chain;Low affinity IL-2R;IL-2Rα chain
<b>Uniprot ID</b>	P01589

### For Research Use Only

**Gene ID**

3559

**Background**

CD25 is a 55 kD type I transmembrane glycoprotein also known as the low affinity IL-2 receptor  $\alpha$  chain or Tac. It is expressed on progenitor lymphocytes, activated T and B cells, and activated monocytes/macrophages. CD25 is also expressed on a subset of non-stimulated CD4+ T cells termed T regulatory cells. CD25 associates with the IL-2 receptor  $\beta$  (CD122) and common  $\gamma$  chains (CD132) to form the high affinity IL-2R complex.

**For Research Use Only**