

BBC3 Polyclonal Antibody

catalog number: **E-AB-40332**

Note: Centrifuge before opening to ensure complete recovery of vial contents.

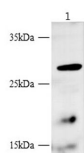
Description

Reactivity	Human
Immunogen	Recombinant Human Bcl-2-binding component 3 protein
Host	Rabbit
Isotype	IgG
Purification	Antigen Affinity Purification
Buffer	PBS with 0.05% Proclin300, 1% protective protein and 50% glycerol, pH7.4

Applications

Applications	Recommended Dilution
WB	1:500-1000
IHC	1:100-1:200

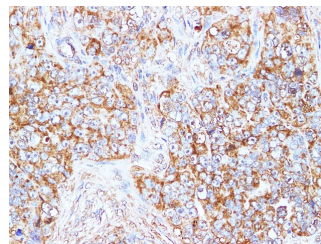
Data



Western blot with Flt3 Polyclonal antibody at dilution of 1:1000. lane 1: K562 whole cell lysate

Observed-MW: 26 kDa

Calculated-MW: 21 kDa



Immunohistochemistry of paraffin-embedded Human ovarian cancer using BBC3 Polyclonal Antibody at dilution of 1:100

Preparation & Storage

Storage	Store at -20°C Valid for 12 months. Avoid freeze / thaw cycles.
Shipping	The product is shipped with ice pack, upon receipt, store it immediately at the temperature recommended.

Background

This gene encodes a member of the BCL-2 family of proteins. This family member belongs to the BH3-only pro-apoptotic subclass. The protein cooperates with direct activator proteins to induce mitochondrial outer membrane permeabilization and apoptosis. It can bind to anti-apoptotic Bcl-2 family members to induce mitochondrial dysfunction and caspase activation. Because of its pro-apoptotic role, this gene is a potential drug target for cancer therapy and for tissue injury. Alternative splicing results in multiple transcript variants.

For Research Use Only