

ATAD3A/ATAD3B Polyclonal Antibody

catalog number: E-AB-92461

Note: Centrifuge before opening to ensure complete recovery of vial contents.

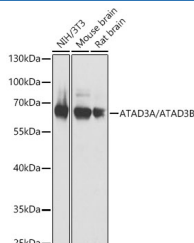
Description

Reactivity	Human;Mouse;Rat
Immunogen	Recombinant fusion protein of human ATAD3B
Host	Rabbit
Isotype	IgG
Purification	Affinity purification
Buffer	Phosphate buffered solution, pH 7.4, containing 0.05% stabilizer and 50% glycerol.

Applications

WB	1:500-1:2000
IF	1:50-1:200

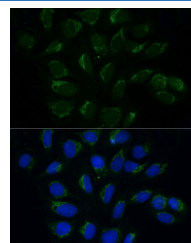
Data



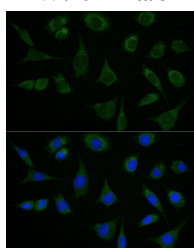
Western blot analysis of extracts of various lysates using ATAD3A/ATAD3B Polyclonal Antibody at 1:1000 dilution.

Observed-MW:68 kDa

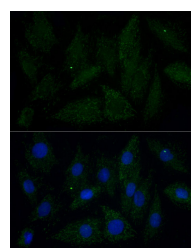
Calculated-MW:19 kDa/67 kDa/72 kDa



Immunofluorescence analysis of U2OS cells using ATAD3A/ATAD3B Polyclonal Antibody at dilution of 1:100 (40x lens).Blue: DAPI for nuclear staining.



Immunofluorescence analysis of L929 cells using ATAD3A/ATAD3B Polyclonal Antibody at dilution of 1:100 (40x lens).Blue: DAPI for nuclear staining.



Immunofluorescence analysis of H9C2 cells using ATAD3A/ATAD3B Polyclonal Antibody at dilution of 1:100 (40x lens).Blue: DAPI for nuclear staining.

Preparation & Storage

Storage	Store at -20°C Valid for 12 months. Avoid freeze / thaw cycles.
Shipping	The product is shipped with ice pack,upon receipt,store it immediately at the temperature recommended.

Background

For Research Use Only

The protein encoded by this gene is localized to the mitochondrial inner membrane, where it can bind to a highly-related protein, ATAD3A. ATAD3A appears to interact with matrix nucleoid complexes, and the encoded protein negatively regulates that interaction. This gene is expressed almost exclusively in pluripotent embryonic stem cells and some cancer cells. Two transcript variants encoding different isoforms have been found for this gene.