

NECTIN4 Polyclonal Antibody

catalog number: E-AB-11438

Note: Centrifuge before opening to ensure complete recovery of vial contents.

Description

Reactivity	Human;Mouse
Immunogen	Recombinant protein of human PVRL4
Host	Rabbit
Isotype	IgG
Purification	Affinity purification
Buffer	Phosphate buffered solution, pH 7.4, containing 0.05% stabilizer and 50% glycerol.

Applications

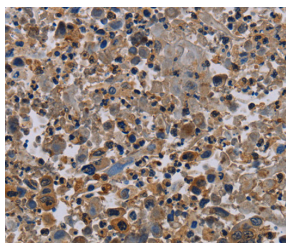
Applications	Recommended Dilution
WB	1:500-1:2000
IHC	1:100-1:300

Data

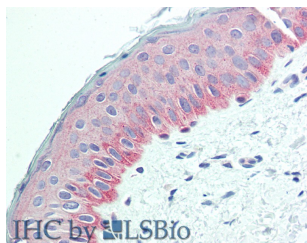


Western Blot analysis of SKOV3 cell using NECTIN4 Polyclonal Antibody at dilution of 1:350

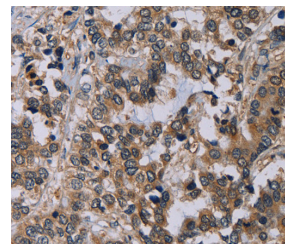
Calculated-MW:55 kDa



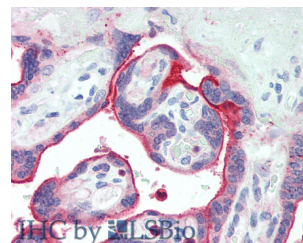
Immunohistochemistry of paraffin-embedded Human lung cancer using NECTIN4 Polyclonal Antibody at dilution of 1:60



Immunohistochemistry of paraffin-embedded Human Skin using NECTIN4 Polyclonal Antibody at dilution of 1:90(Elabscience Product Detected by Lifespan).



Immunohistochemistry of paraffin-embedded Human liver cancer using NECTIN4 Polyclonal Antibody at dilution of 1:60



Immunohistochemistry of paraffin-embedded Human Placenta using NECTIN4 Polyclonal Antibody at dilution of 1:90(Elabscience Product Detected by Lifespan).

Preparation & Storage

For Research Use Only

Storage

Store at -20°C Valid for 12 months. Avoid freeze / thaw cycles.

Shipping

The product is shipped with ice pack, upon receipt, store it immediately at the temperature recommended.

Background

This gene encodes a member of the nectin family. The encoded protein contains two immunoglobulin-like (Ig-like) C2-type domains and one Ig-like V-type domain. It is involved in cell adhesion through trans-homophilic and -heterophilic interactions. It is a single-pass type I membrane protein. The soluble form is produced by proteolytic cleavage at the cell surface by the metalloproteinase ADAM17/TACE. The secreted form is found in both breast tumor cell lines and breast tumor patients. Mutations in this gene are the cause of ectodermal dysplasia-syndactyly syndrome type 1, an autosomal recessive disorder. Alternatively spliced transcript variants have been found but the full-length nature of the variant has not been determined.

For Research Use Only