

## Recombinant MHC Class I Monoclonal Antibody

**catalog number: E-AB-81519**

**Note:** Centrifuge before opening to ensure complete recovery of vial contents.

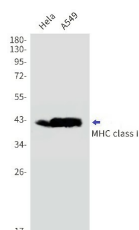
### Description

<b>Reactivity</b>	Human
<b>Immunogen</b>	A synthesized peptide derived from human MHC class I
<b>Host</b>	Rabbit
<b>Isotype</b>	IgG
<b>Clone</b>	R02-5C6
<b>Purification</b>	Affinity Purified
<b>Buffer</b>	50mM Tris-Glycine(pH 7.4), 0.15M NaCl, 40% Glycerol, 0.05% stabilizer and 0.05% protective protein.

### Applications

Applications	Recommended Dilution
<b>WB</b>	1:1000-1:2000
<b>IHC</b>	1:50-1:100

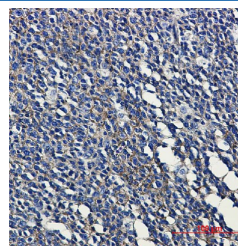
### Data



Western blot detection of MHC class I in HeLa, A549 cell lysates using MHC class I Rabbit mAb (1:1000 diluted). Observed band size: 41 kDa.

**Observed-MW: 41 kDa**

**Calculated-MW: 41 kDa**



Immunohistochemical of MHC class I in Human tonsil tissue using MHC class I antibody at dilution 1:50

### Preparation & Storage

<b>Storage</b>	Store at -20°C Valid for 12 months. Avoid freeze / thaw cycles.
<b>Shipping</b>	The product is shipped with ice pack, upon receipt, store it immediately at the temperature recommended.

### Background

Major histocompatibility complex (MHC) molecules form an integral part of the immune response system. They are cell-surface receptors that bind peptides and present them to T lymphocytes. HLA-A, -B and -C encode membrane anchored heavy chains which heterodimerize with a light chain (β-2-Microglobulin) to form MHC-I. Polymorphisms yield hundreds of HLA-A, -B and -C alleles.

### For Research Use Only