

Elab Fluor® 488 Goat Anti-Mouse IgG (H+L) Antibody[Poly1440]

Catalog Number: AN00338L

Note: Centrifuge before opening to ensure complete recovery of vial contents.

Description

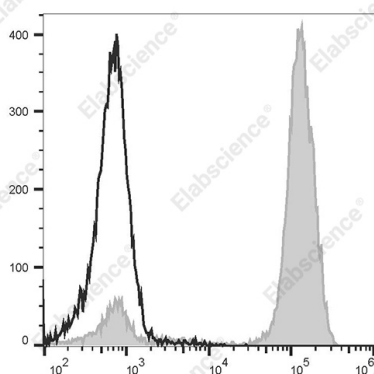
Reactivity	Mouse
Host	Goat
Isotype	Goat Polyclonal IgG
Clone No.	Poly1440
Conjugation	Elab Fluor® 488
Conjugation Information	Elab Fluor® 488 is designed to be excited by the Blue laser (488 nm) and detected using an optical filter centered near 520 nm (e.g., a 525/40 nm bandpass filter).
Storage Buffer	Phosphate buffered solution, pH 7.2, containing 0.09% stabilizer and 1% protein protectant.

Applications

Recommended usage

FCM	Each lot of this antibody is quality control tested by flow cytometric analysis. The amount of the reagent is suggested to be used 5 µL of antibody per test (million cells in 100 µL staining volume or per 100 µL of whole blood). Please check your vial before the experiment. Since applications vary, the appropriate dilutions must be determined for individual use.
-----	---

Data



Staining of normal human peripheral blood cells with purified mouse anti-human CD3, followed by Elab Fluor® 488 Goat Anti-Mouse IgG (H+L) Antibody[Poly1440](filled gray histogram). Cells in the lymphocytes gate were used for analysis.

Preparation & Storage

Storage	Keep as concentrated solution. This product can be stored at 2-8°C for 12 months. Please protected from prolonged exposure to light and do not freeze.
Shipping	Ice bag

Antigen Information

Alternate Names	Goat Anti-Mouse IgG
Uniprot ID	Q61559
Gene ID	16059

For Research Use Only

Toll-free: 1-888-852-8623
Web: www.elabscience.com

Tel: 1-832-243-6086
Email: techsupport@elabscience.com

Fax: 1-832-243-6017

Rev. V1.8

Background

This polyclonal goat anti-mouse IgG antibody reacts with the heavy chains of mouse IgG and with the light (kappa and lambda) chains common to most mouse immunoglobulins. No cross-reactivity has been detected against non-immunoglobulin serum proteins. This antibody has been solid-phase absorbed to ensure minimal cross-reaction with rat, human, bovine, horse, and rabbit immunoglobulins, but it may have minimal cross-reactivity with other subclasses of mouse immunoglobulins.

For Research Use Only