

## Recombinant Rat ALCAM/CD166 Protein (His Tag)

**Catalog Number:** PKSR030308

**Note:** Centrifuge before opening to ensure complete recovery of vial contents.

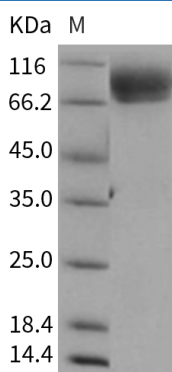
### Description

<b>Species</b>	Rat
<b>Source</b>	HEK293 Cells-derived Rat ALCAM/CD166 protein Met1-Lys527, with an C-terminal His
<b>Calculated MW</b>	57.5 kDa
<b>Observed MW</b>	68-91 kDa
<b>Accession</b>	O35112
<b>Bio-activity</b>	Immobilized rat ALCAM-His at 10 µg/ml (100 µl/well) can bind mouse CD6-Fc, The EC <sub>50</sub> of mouse CD6-Fc is 0.08-0.18 µg/ml.

### Properties

<b>Purity</b>	> 98 % as determined by reducing SDS-PAGE.
<b>Endotoxin</b>	< 1.0 EU per µg of the protein as determined by the LAL method.
<b>Storage</b>	Generally, lyophilized proteins are stable for up to 12 months when stored at -20 to -80 °C. Reconstituted protein solution can be stored at 4-8°C for 2-7 days. Aliquots of reconstituted samples are stable at < -20°C for 3 months.
<b>Shipping</b>	This product is provided as lyophilized powder which is shipped with ice packs.
<b>Formulation</b>	Lyophilized from sterile PBS, pH 7.4 Normally 5% - 8% trehalose, mannitol and 0.01% Tween 80 are added as protectants before lyophilization. Please refer to the specific buffer information in the printed manual.
<b>Reconstitution</b>	Please refer to the printed manual for detailed information.

### Data



> 98 % as determined by reducing SDS-PAGE.

### Background

### For Research Use Only

Toll-free: 1-888-852-8623  
Web: [www.elabscience.com](http://www.elabscience.com)

Tel: 1-832-243-6086  
Email: [techsupport@elabscience.com](mailto:techsupport@elabscience.com)

Fax: 1-832-243-6017

Rev. V3.5

Activated leukocyte cell adhesion molecule (ALCAM)/Cluster of differentiation (CD166) is a type I transmembrane cell adhesion molecule belonging to the Ig superfamily and a ligand for CD6 that is expressed on T lymphocytes. The extracellular domain of ALCAM contains five Ig-like domains (three Ig-like C2-type domains and two Ig-like V-type domains), of which the amino-terminal V1 domain is essential for ligand binding and ALCAM-mediated cell aggregation. ALCAM mediates both heterophilic (ALCAM-CD6) and homophilic (ALCAM-ALCAM) cell-cell interactions. ALCAM/CD6 interaction plays a role in T cell development and T cell regulation, as well as in the binding of T- and B-cells to activated leukocytes. Recently, homophilic (ALCAM-ALCAM) adhesion was shown to play important roles in tight cell-to-cell interaction and regulation of stem cell differentiation. While expressed in a wide variety of tissues, ALCAM is usually restricted to subsets of cells involved in dynamic growth and/or migration, including neural development, branching organ development, hematopoiesis, immune response and tumor progression. And CD166 is regarded as a potential novel breast cancer indicator and therapeutic target.