

Recombinant Human Lymphotactin/XCL1 Protein (Fc & His Tag)

Catalog Number: PKSH032717

Note: Centrifuge before opening to ensure complete recovery of vial contents.

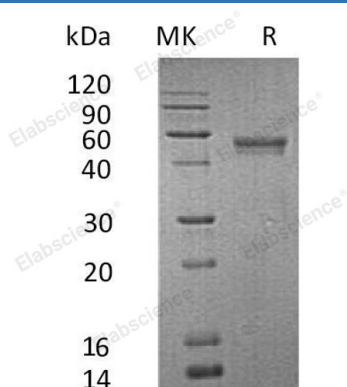
Description

Species	Human
Source	HEK293 Cells-derived Human Lymphotactin;XCL1 protein Val22-Gly114, with an C-terminal Fc & His
Calculated MW	38.2 kDa
Observed MW	54 kDa
Accession	P47992
Bio-activity	Not validated for activity

Properties

Purity	> 95 % as determined by reducing SDS-PAGE.
Endotoxin	< 1.0 EU per µg of the protein as determined by the LAL method.
Storage	Generally, lyophilized proteins are stable for up to 12 months when stored at -20 to -80 °C. Reconstituted protein solution can be stored at 4-8°C for 2-7 days. Aliquots of reconstituted samples are stable at < -20°C for 3 months.
Shipping	This product is provided as lyophilized powder which is shipped with ice packs.
Formulation	Lyophilized from a 0.2 µm filtered solution of PBS, pH 7.4. Normally 5% - 8% trehalose, mannitol and 0.01% Tween 80 are added as protectants before lyophilization.
Reconstitution	Please refer to the specific buffer information in the printed manual. Please refer to the printed manual for detailed information.

Data



> 95 % as determined by reducing SDS-PAGE.

Background

Lymphotactin is a secreted protein which belongs to the intercrine gamma family. It is also a member of the XC chemokine family. XCL1 is found in spleen with highest level, lower in peripheral leukocytes and very low levels in lung, colon and small intestine. XCL1 plays a role in inflammatory and immunological responses, inducing leukocyte migration and activation. XCL1 induces chemotactic function by binding to a chemokine receptor called XCR1. XCL1 is closely related to another chemokine called XCL2.

For Research Use Only