

Recombinant CD48/SLAMF2 Monoclonal Antibody

catalog number: AN300516P

Note: Centrifuge before opening to ensure complete recovery of vial contents.

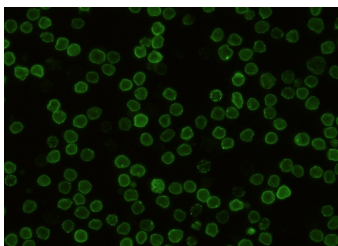
Description

Reactivity	Mouse
Immunogen	Recombinant Mouse CD48/SLAMF2 protein
Host	Rabbit
Isotype	IgG
Clone	9A2
Purification	Protein A
Buffer	0.2 µm filtered solution in PBS

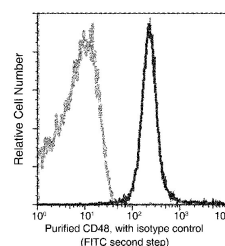
Applications Recommended Dilution

ICC/IF	1:20-1:100
FCM	1:25-1:100

Data



Immunofluorescence analysis of Mouse CD48 in Mouse Spleen cells. Cells were fixed with 4% PFA, blocked with 10% serum, and incubated with rabbit anti-mouse CD48 monoclonal antibody (1:60) at 37°C 1 hour. Then cells were stained with the Alexa Fluor® 488-conjugated Goat Anti-rabbit IgG secondary antibody (green). Positive staining was localized to cell membrane.



Flow cytometric analysis of Mouse CD48 expression on BABL/c splenocytes. Cells were stained with purified anti-Mouse CD48, then a FITC-conjugated second step antibody. The fluorescence histograms were derived from gated events with the forward and side light-scatter characteristics of intact cells.

Preparation & Storage

Storage	This antibody can be stored at 2°C-8°C for one month without detectable loss of activity. Antibody products are stable for twelve months from date of receipt when stored at -20°C to -80°C. Preservative-Free. Avoid repeated freeze-thaw cycles.
Shipping	Ice bag

Background

Cluster of Differentiation 48 (CD48), also known as SLAMF2, BCM-1 and BLAST-1, is a GPI-linked protein belonging to the CD2 subfamily of immunoglobulin superfamily molecules. CD2 and 2B4 (CD244) are known ligands for CD48. CD48 protein is expressed on most lineage-committed hematopoietic cells but not on hematopoietic stem cells or multipotent hematopoietic progenitors. CD48 protein performs biological functions in a variety of processes including adhesion, pathogen recognition, cellular activation, and cytokine regulation, and emerges as a critical effector molecule in immune responses.

For Research Use Only