

Recombinant Human CFHR2 Protein (His Tag)

Catalog Number: PKSH032275

Note: Centrifuge before opening to ensure complete recovery of vial contents.

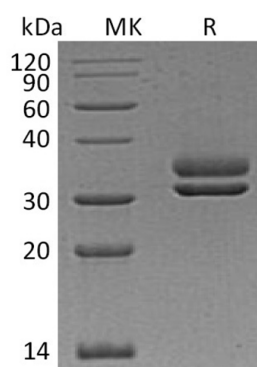
Description

Species	Human
Source	HEK293 Cells-derived Human CFHR2 protein Glu19-Lys270, with an C-terminal His
Calculated MW	29.8 kDa
Observed MW	31&35 kDa
Accession	P36980
Bio-activity	Not validated for activity

Properties

Purity	> 95 % as determined by reducing SDS-PAGE.
Endotoxin	< 1.0 EU per µg of the protein as determined by the LAL method.
Storage	Generally, lyophilized proteins are stable for up to 12 months when stored at -20 to -80 °C. Reconstituted protein solution can be stored at 4-8°C for 2-7 days. Aliquots of reconstituted samples are stable at < -20°C for 3 months.
Shipping	This product is provided as lyophilized powder which is shipped with ice packs.
Formulation	Lyophilized from a 0.2 µm filtered solution of 20mM PB, 200mM NaCl, 2mM EDTA, pH 7.4. Normally 5% - 8% trehalose, mannitol and 0.01% Tween 80 are added as protectants before lyophilization. Please refer to the specific buffer information in the printed manual.
Reconstitution	Please refer to the printed manual for detailed information.

Data



> 95 % as determined by reducing SDS-PAGE.

Background

Complement Factor H-Related Protein 2 (CFHR2) is a secreted protein that belongs to the complement factor H protein family. Members of the H-related protein family are exclusively composed of individually folded protein domains, termed short consensus repeats (SCRs) or complement control modules. CFHR2 is synthesized as a 270 amino acid precursor that contains an 18 amino acid signal peptide and a 252 amino acid mature chain with 4 Sushi (CCP/SCR) domains. CFHR2 is synthesized in the liver and secreted into plasma. It may be involved in complement regulation. CFHR2 can also be associated with lipoproteins and may play a role in lipid metabolism.

For Research Use Only

Toll-free: 1-888-852-8623
Web: www.elabscience.com

Tel: 1-832-243-6086
Email: techsupport@elabscience.com

Fax: 1-832-243-6017