

RPL26L1 Polyclonal Antibody

catalog number: **E-AB-68013**

Note: Centrifuge before opening to ensure complete recovery of vial contents.

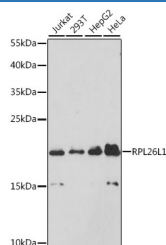
Description

Reactivity	Human
Immunogen	Recombinant fusion protein of human RPL26L1 (NP_057177.1).
Host	Rabbit
Isotype	IgG
Purification	Affinity purification
Buffer	Phosphate buffered solution, pH 7.4, containing 0.05% stabilizer and 50% glycerol.

Applications

WB	1:200-1:2000
-----------	--------------

Data



Western blot analysis of extracts of various cell lines using RPL26L1 Polyclonal Antibody at dilution of 1:3000.

Observed-MW:20 kDa

Calculated-MW:17 kDa

Preparation & Storage

Storage	Store at -20°C Valid for 12 months. Avoid freeze / thaw cycles.
Shipping	The product is shipped with ice pack, upon receipt, store it immediately at the temperature recommended.

Background

This gene encodes a protein that shares high sequence similarity with ribosomal protein L26. Alternative splicing results in multiple transcript variants encoding the same protein.

For Research Use Only