

## GTF3C6 Polyclonal Antibody

**catalog number: E-AB-90621**

**Note:** Centrifuge before opening to ensure complete recovery of vial contents.

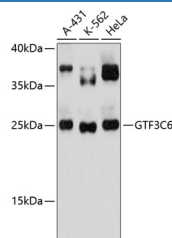
### Description

<b>Reactivity</b>	Human
<b>Immunogen</b>	Recombinant fusion protein of human GTF3C6
<b>Host</b>	Rabbit
<b>Isotype</b>	IgG
<b>Purification</b>	Affinity purification
<b>Buffer</b>	Phosphate buffered solution, pH 7.4, containing 0.05% stabilizer and 50% glycerol.

### Applications Recommended Dilution

<b>WB</b>	1:500-1:2000
-----------	--------------

### Data



Western blot analysis of extracts of various cell lines using GTF3C6 Polyclonal Antibody at 1:3000 dilution.

**Observed-MW:24 kDa**

**Calculated-MW:24 kDa**

### Preparation & Storage

<b>Storage</b>	Store at -20°C Valid for 12 months. Avoid freeze / thaw cycles.
<b>Shipping</b>	The product is shipped with ice pack, upon receipt, store it immediately at the temperature recommended.

### Background

RNA polymerases are unable to initiate RNA synthesis in the absence of additional proteins called general transcription factors (GTFs). GTFs assemble in a complex on the DNA promoter and recruit the RNA polymerase. GTF3C family proteins (e.g., GTF3C1, MIM 603246) are essential for RNA polymerase III to make a number of small nuclear and cytoplasmic RNAs, including 5S RNA (MIM 180420), tRNA, and adenovirus-associated (VA) RNA of both cellular and viral origin.[supplied by OMIM, Mar 2008]

### For Research Use Only