

Recombinant Human BCL6/B-cell CLL lymphoma 6 Protein (aa 1-150, His & Trx Tag)

Catalog Number: PKSH030910

Note: Centrifuge before opening to ensure complete recovery of vial contents.

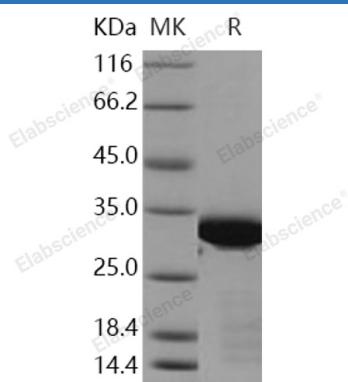
Description

Species	Human
Source	E.coli-derived Human BCL6/B-cell CLL lymphoma 6 protein Met 1-Met 150, with an N-terminal Trx & His
Calculated MW	34.2 kDa
Observed MW	33 kDa
Accession	P41182
Bio-activity	Not validated for activity

Properties

Purity	> 92 % as determined by reducing SDS-PAGE.
Endotoxin	Please contact us for more information.
Storage	Generally, lyophilized proteins are stable for up to 12 months when stored at -20 to -80 °C. Reconstituted protein solution can be stored at 4-8°C for 2-7 days. Aliquots of reconstituted samples are stable at < -20°C for 3 months.
Shipping	This product is provided as lyophilized powder which is shipped with ice packs.
Formulation	Lyophilized from sterile 20mM Tris, 10% glycerol, pH 8.0 Normally 5% - 8% trehalose, mannitol and 0.01% Tween 80 are added as protectants before lyophilization. Please refer to the specific buffer information in the printed manual.
Reconstitution	Please refer to the printed manual for detailed information.

Data



> 92 % as determined by reducing SDS-PAGE.

Background

The protein encoded by this gene is an evolutionarily conserved 95-kDa protein containing six C-terminal zinc-finger motifs and an N-terminal POZ domain. It has been reported that BCL-6 is present in DNA-binding complexes in nuclear extracts from various B-cell lines. There are many relationships between non-Hodgkin's lymphoma, diffuse large cell lymphoma and BCL6's translocations. BCL6 can repress transcription from promoters linked to its DNA target sequence and this activity is dependent upon specific DNA-binding and the presence of an intact N-terminal half of the protein.

For Research Use Only

Toll-free: 1-888-852-8623
Web: www.elabscience.com

Tel: 1-832-243-6086
Email: techsupport@elabscience.com

Fax: 1-832-243-6017