

## Recombinant Mouse IGFBP-1 Protein(Sumo Tag)

**Catalog Number:** PDEM100194

**Note:** Centrifuge before opening to ensure complete recovery of vial contents.

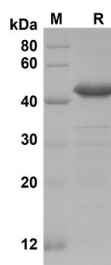
### Description

<b>Species</b>	Mouse
<b>Source</b>	E.coli-derived Mouse IGFBP-1 protein Ala26-Asn272, with an N-terminal Sumo
<b>Calculated MW</b>	40.1 kDa
<b>Observed MW</b>	42 kDa
<b>Accession</b>	P47876
<b>Bio-activity</b>	Not validated for activity

### Properties

<b>Purity</b>	> 90% as determined by reducing SDS-PAGE.
<b>Endotoxin</b>	< 10 EU/mg of the protein as determined by the LAL method
<b>Storage</b>	Generally, lyophilized proteins are stable for up to 12 months when stored at -20 to -80 °C. Reconstituted protein solution can be stored at 4-8°C for 2-7 days. Aliquots of reconstituted samples are stable at < -20°C for 3 months.
<b>Shipping</b>	This product is provided as lyophilized powder which is shipped with ice packs.
<b>Formulation</b>	Lyophilized from a 0.2 µm filtered solution in PBS with 5% Trehalose and 5% Mannitol.
<b>Reconstitution</b>	It is recommended that sterile water be added to the vial to prepare a stock solution of 0.5 mg/mL. Concentration is measured by UV-Vis.

### Data



SDS-PAGE analysis of Mouse IGFBP-1 proteins, 2µg/lane of

Recombinant Mouse IGFBP-1 proteins was resolved with  
SDS-PAGE under reducing conditions, showing bands at 42  
KD

### Background

### For Research Use Only

Toll-free: 1-888-852-8623  
Web: [www.elabscience.com](http://www.elabscience.com)

Tel: 1-832-243-6086  
Email: [techsupport@elabscience.com](mailto:techsupport@elabscience.com)

Fax: 1-832-243-6017

Rev. V1.7

IGFBP1, also known as IGFBP-1 and insulin-like growth factor-binding protein 1, is a member of the insulin-like growth factor-binding protein family. IGF binding proteins (IGFBPs) are proteins of 24 to 45 KD. All six IGFBPs share 50% homology and have binding affinities for IGF-I and IGF-II at the same order of magnitude as the ligands have for the IGF-IR. IGF-binding proteins prolong the half-life of the IGFs and have been shown to either inhibit or stimulate the growth-promoting effects of the IGFs on cell culture. They alter the interaction of IGFs with their cell surface receptors. IGFBP1 has an IGFBP domain and a thyroglobulin type-I domain. It binds both insulin-like growth factors (IGFs) I and II and circulates in the plasma. The binding of this protein prolongs the half-life of the IGFs and alters their interaction with cell surface receptors.