

Recombinant Mouse ICAM-1/CD54 Protein (His Tag)

Catalog Number: PKSM040683

Note: Centrifuge before opening to ensure complete recovery of vial contents.

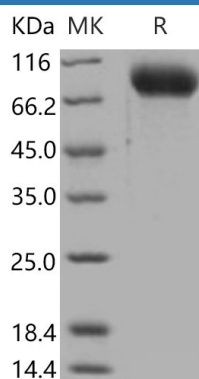
Description

Species	Mouse
Source	HEK293 Cells-derived Mouse ICAM-1/CD54 protein Met 1-Asn 485, with an C-terminal His
Calculated MW	51.7 kDa
Observed MW	80-90 kDa
Accession	NP_034623.1
Bio-activity	Measured by the ability of the immobilized protein to support the adhesion of PMA-stimulated HSB2 human peripheral blood acute lymphoblastic leukemia cells. When cells are added to mouse ICAM1 coated plates (12.5 µg/mL, 100 µL/well), approximately > 40% cells will adhere specifically.

Properties

Purity	> 96 % as determined by reducing SDS-PAGE.
Endotoxin	< 1.0 EU per µg of the protein as determined by the LAL method.
Storage	Generally, lyophilized proteins are stable for up to 12 months when stored at -20 to -80 °C. Reconstituted protein solution can be stored at 4-8°C for 2-7 days. Aliquots of reconstituted samples are stable at < -20°C for 3 months.
Shipping	This product is provided as lyophilized powder which is shipped with ice packs.
Formulation	Lyophilized from sterile PBS, pH 7.4 Normally 5% - 8% trehalose, mannitol and 0.01% Tween 80 are added as protectants before lyophilization. Please refer to the specific buffer information in the printed manual.
Reconstitution	Please refer to the printed manual for detailed information.

Data



> 96 % as determined by reducing SDS-PAGE.

Background

For Research Use Only

Toll-free: 1-888-852-8623
Web: www.elabscience.com

Tel: 1-832-243-6086
Email: techsupport@elabscience.com

Fax: 1-832-243-6017

Rev. V3.5

Intercellular adhesion molecule-1 (ICAM-1, or CD54) is a 90 kDa member of the immunoglobulin (Ig) superfamily and is critical for the firm arrest and transmigration of leukocytes out of blood vessels and into tissues. ICAM-1 is constitutively present on endothelial cells, but its expression is increased by proinflammatory cytokines. The endothelial expression of ICAM-1 is increased in atherosclerotic and transplant-associated atherosclerotic tissue and in animal models of atherosclerosis. Additionally, ICAM-1 has been implicated in the progression of autoimmune diseases. ICAM-1 is a ligand for LFA-1(integrin). When activated, leukocytes bind to endothelial cells via ICAM-1/LFA-1 interaction and then transmigrate into tissues. Presence with heavy glycosylation and other structural characteristics, ICAM-1 possesses binding sites for a number of immune-associated ligands and serves as the binding site for entry of the major group of human Rhinovirus (HRV) into various cell types. ICAM-1 also becomes known for its affinity for Plasmodium falciparum-infected erythrocytes (PFIE), providing more of a role in infectious disease. Previous studies have shown that ICAM-1 is involved in inflammatory reactions and that a defect in ICAM-1 gene inhibits allergic contact hypersensitivity.