

Beta-2 microglobulin/B2M Monoclonal Antibody

catalog number: **AN200123P**

Note: Centrifuge before opening to ensure complete recovery of vial contents.

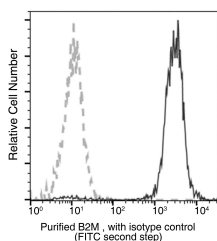
Description

Reactivity	Human
Immunogen	Recombinant Human Beta-2 microglobulin/B2M Protein
Host	Mouse
Isotype	IgG1
Clone	A971
Purification	Protein A
Buffer	0.2 µm filtered solution in PBS

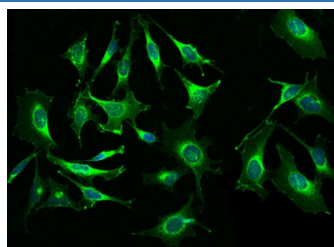
Applications Recommended Dilution

WB	1:500-1:2000
FCM	1:25-1:100
IHC-P	1:30-1:100
ICC/IF	1:20-1:100

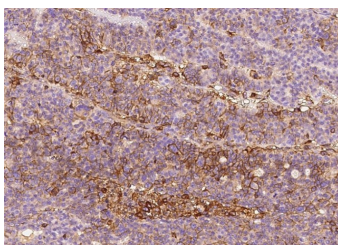
Data



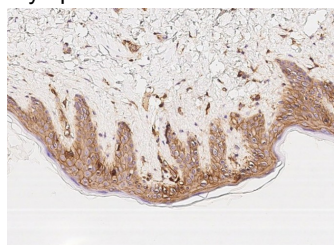
Flow cytometric analysis of Human B2M / Beta-2-microglobulin expression on human whole blood lymphocytes. Cells were stained with purified anti-Human B2M / Beta-2-microglobulin, then a PE-conjugated second step antibody. The fluorescence histograms were derived from gated events with the forward and side light-scatter characteristics of viable lymphocytes.



Immunofluorescence analysis of B2M in Hela cells. Cells were fixed with 4% PFA, permeabilized with 0.1% Triton X-100 in PBS, blocked with 10% serum, and incubated with mouse anti-human B2M Monoclonal Antibody (dilution ratio 1:60) at 4°C overnight. Then cells were stained with the Alexa Fluor®488-conjugated Goat Anti-mouse IgG secondary antibody (green) and counterstained with DAPI for nuclear staining (blue). Positive staining was localized to Cytoplasm and cell membrane.



Immunohistochemistry of paraffin-embedded human ovarian cancer using Beta-2 microglobulin/B2M Monoclonal Antibody at dilution of 1:60.



Immunohistochemistry of paraffin-embedded human skin using Beta-2 microglobulin/B2M Monoclonal Antibody at dilution of 1:60.

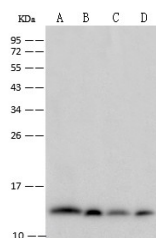
For Research Use Only

Toll-free: 1-888-852-8623
Web: www.elabscience.com

Tel: 1-832-243-6086
Email: techsupport@elabscience.com

Fax: 1-832-243-6017

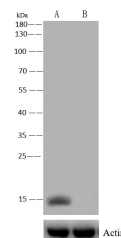
Rev. V1.2



Western Blot with Beta-2 microglobulin/B2M Monoclonal Antibody at dilution of 1:500. Lane A: A431 Whole Cell Lysate, Lane B: U937 Whole Cell Lysate, Lane C: Raji Whole Cell Lysate, Lane D: HeLa Whole Cell Lysate, Lysates/proteins at 30 µg per lane.

Observed-MW:14 kDa

Calculated-MW:14 kDa



Western Blot with Beta-2 microglobulin/B2M Monoclonal Antibody at dilution of 1:500. Lane A: HeLa Whole Cell Lysate, Lane B: Beta-2 microglobulin konckout HeLa Whole Cell Lysate, Lysates/proteins at 30 µg per lane.

Observed-MW:14 kDa

Calculated-MW:14 kDa

Preparation & Storage

Storage

This antibody can be stored at 2°C-8°C for one month without detectable loss of activity. Antibody products are stable for twelve months from date of receipt when stored at -20°C to -80°C. Preservative-Free. Avoid repeated freeze-thaw cycles.

Shipping

Ice bag

Background

This gene encodes a serum protein found in association with the major histocompatibility complex (MHC) class I heavy chain on the surface of nearly all nucleated cells. The protein has a predominantly beta-pleated sheet structure that can form amyloid fibrils in some pathological conditions. The encoded antimicrobial protein displays antibacterial activity in amniotic fluid. A mutation in this gene has been shown to result in hypercatabolic hypoproteinemia.

For Research Use Only

Toll-free: 1-888-852-8623
Web: www.elabscience.com

Tel: 1-832-243-6086
Email: techsupport@elabscience.com

Fax: 1-832-243-6017

Rev. V1.2