

## Recombinant TSHB Monoclonal Antibody

catalog number: **AN301422L**

**Note:** Centrifuge before opening to ensure complete recovery of vial contents.

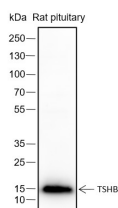
### Description

<b>Reactivity</b>	Human;Rat;
<b>Immunogen</b>	Recombinant human TSHB fragment
<b>Host</b>	Rabbit
<b>Isotype</b>	IgG, $\kappa$
<b>Clone</b>	A117
<b>Purification</b>	Protein A purified
<b>Buffer</b>	PBS, 50% glycerol, 0.05% Proclin 300, 0.05% protein protectant.

### Applications

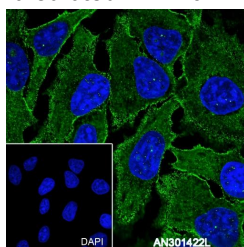
Applications	Recommended Dilution
<b>WB</b>	1:500-1:2000
<b>IHC</b>	1:100-1:500
<b>IF</b>	1:1000-1:2000
<b>FCM</b>	1:50-1:100

### Data

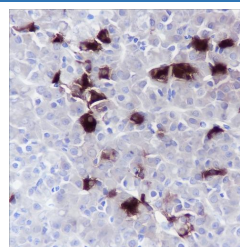


Western Blot with TSHB Monoclonal Antibody at dilution of 1:2000. Lane 1: Rat pituitary

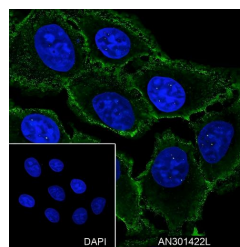
**Observed-MW:16 kDa**  
**Calculated-MW:16 kDa**



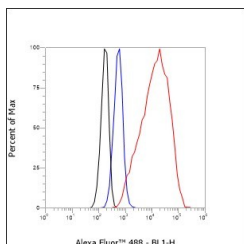
Immunofluorescent analysis of (100% methanol) fixed HeLa cells using anti-TSHB Monoclonal Antibody at dilution of 1:2000.



Immunohistochemistry of paraffin-embedded Rat pituitary using TSHB Monoclonal Antibody at dilution of 1:500.



Immunofluorescent analysis of (100% methanol) fixed U-2 OS cells using anti-TSHB Monoclonal Antibody at dilution of 1:2000.



### For Research Use Only

Toll-free: 1-888-852-8623  
Web: [www.elabscience.com](http://www.elabscience.com)

Tel: 1-832-243-6086  
Email: [techsupport@elabscience.com](mailto:techsupport@elabscience.com)

Fax: 1-832-243-6017

Rev. V1.0

Flow cytometric analysis of human TSHB expression on HeLa cells. Cells were stained with purified anti-Human TSHB, then a Alexa Fluor 488-conjugated second step antibody. The histogram were derived from events with the forward and side light-scatter characteristics of intact cells.

## Preparation & Storage

<b>Storage</b>	Store at -20°C Valid for 12 months. Avoid freeze / thaw cycles.
<b>Shipping</b>	Ice bag

## Background

TSHB (Thyroid Stimulating Hormone Subunit Beta) is a Protein Coding gene. Diseases associated with TSHB include Hypothyroidism, Congenital, Nongoitrous, 4 and Central Congenital Hypothyroidism. Among its related pathways are Signaling by GPCR and Peptide hormone metabolism. Gene Ontology (GO) annotations related to this gene include hormone activity. An important paralog of this gene is FSHB.

## For Research Use Only