

# beta Tubulin Monoclonal Antibody

catalog number: E-AB-20093

**Note:** Centrifuge before opening to ensure complete recovery of vial contents.

## Description

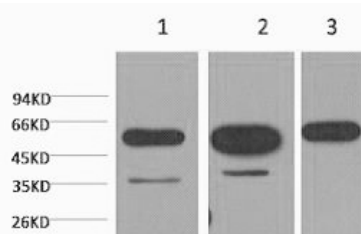
<b>Reactivity</b>	Human;Mouse;Rat
<b>Immunogen</b>	Synthetic Peptide
<b>Host</b>	Mouse
<b>Isotype</b>	IgG
<b>Clone</b>	4A6
<b>Purification</b>	Protein A purification
<b>Conjugation</b>	Unconjugated
<b>buffer</b>	Phosphate buffered solution, pH 7.4, containing 0.05% stabilizer, 0.5% protein protectant and 50% glycerol.

## Applications

## Recommended Dilution

<b>WB</b>	1:5000-10000
<b>IF</b>	1:100-200

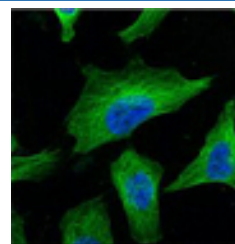
## Data



Western Blot analysis of 1) Hela, 2) Mouse brain, 3) Rat brain using beta Tubulin Monoclonal Antibody at dilution of 1:5000.

**Observed-MV:55 kDa**

**Calculated-MV:50 kDa**



Immunofluorescence analysis of Hela cells using beta Tubulin Monoclonal Antibody at dilution of 1:100.

## Preparation & Storage

<b>Storage</b>	Store at -20°C Valid for 12 months. Avoid freeze / thaw cycles.
<b>Shipping</b>	The product is shipped with ice pack, upon receipt, store it immediately at the temperature recommended.

## Background

TUBB3, the class III  $\beta$  tubulin or Tuj1, is selectively expressed in testis and neurons of the central and peripheral nervous system. It has been widely used as a marker for neurons. Aberrant expression of TUBB3 has also been found in various tumors of non-neural origin and can be used as a biomarker for cancer aggressiveness and a marker for the tendency to respond poorly to chemotherapy. This antibody is specific to TUBB3 but not cross-react with other tubulin isoforms.

## For Research Use Only