

## USO1 Polyclonal Antibody

catalog number: **E-AB-66683**

**Note:** Centrifuge before opening to ensure complete recovery of vial contents.

### Description

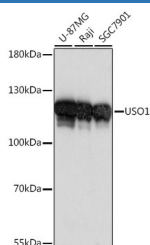
<b>Reactivity</b>	Human;Rat
<b>Immunogen</b>	Recombinant fusion protein of human USO1 (NP_003706.2).
<b>Host</b>	Rabbit
<b>Isotype</b>	IgG
<b>Purification</b>	Affinity purification
<b>Buffer</b>	Phosphate buffered solution, pH 7.4, containing 0.05% stabilizer and 50% glycerol.

### Applications

### Recommended Dilution

<b>WB</b>	1:500-1:2000
<b>IF</b>	1:50-1:100

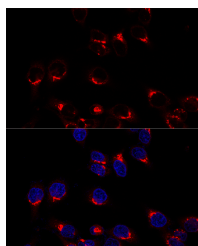
### Data



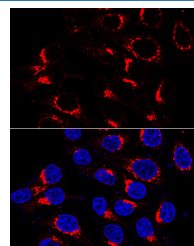
Western blot analysis of extracts of various cell lines using USO1 Polyclonal Antibody at dilution of 1:1000.

**Observed-MV:108 kDa**

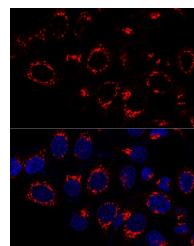
**Calculated-MV:107 kDa/109 kDa**



Confocal immunofluorescence analysis of HeLa cells using USO1 Polyclonal Antibody at dilution of 1:200. Blue: DAPI for nuclear staining.



Immunofluorescence analysis of HeLa cells using USO1 Polyclonal Antibody at dilution of 1:200 (60x lens). Blue: DAPI for nuclear staining.



Confocal immunofluorescence analysis of HeLa cells using USO1 Polyclonal Antibody at dilution of 1:50. Blue: DAPI for nuclear staining.

### Preparation & Storage

<b>Storage</b>	Store at -20°C Valid for 12 months. A void freeze / thaw cycles.
<b>Shipping</b>	The product is shipped with ice pack,upon receipt,store it immediately at the temperature recommended.

### Background

### For Research Use Only

The protein encoded by this gene is a peripheral membrane protein which recycles between the cytosol and the Golgi apparatus during interphase. It is regulated by phosphorylation: dephosphorylated protein associates with the Golgi membrane and dissociates from the membrane upon phosphorylation. Ras-associated protein 1 recruits this protein to coat protein complex II (COPII) vesicles during budding from the endoplasmic reticulum, where it interacts with a set of COPII vesicle-associated SNAREs to form a cis-SNARE complex that promotes targeting to the Golgi apparatus.

Alternative splicing results in multiple transcript variants.

## For Research Use Only