

## SETD5 Polyclonal Antibody

**catalog number: E-AB-66226**

**Note:** Centrifuge before opening to ensure complete recovery of vial contents.

### Description

<b>Reactivity</b>	Human
<b>Immunogen</b>	Recombinant fusion protein of human SETD5
<b>Host</b>	Rabbit
<b>Isotype</b>	IgG
<b>Purification</b>	Affinity purification
<b>Buffer</b>	Phosphate buffered solution, pH 7.4, containing 0.05% stabilizer and 50% glycerol.

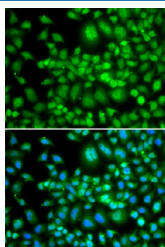
### Applications

IF

### Recommended Dilution

1:50-1:200

### Data



Immunofluorescence analysis of MCF-7 cells using SETD5

Polyclonal Antibody Blue: DAPI for nuclear staining.

### Preparation & Storage

<b>Storage</b>	Store at -20°C Valid for 12 months. Avoid freeze / thaw cycles.
<b>Shipping</b>	The product is shipped with ice pack, upon receipt, store it immediately at the temperature recommended.

### Background

This function of this gene has yet to be determined but mutations in this gene have been associated with autosomal dominant mental retardation-23. Alternative splicing results in multiple transcript variants encoding different isoforms.

### For Research Use Only