

Note: Centrifuge before opening to ensure complete recovery of vial contents.

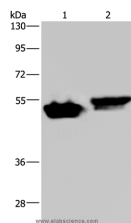
Description

Reactivity	Human, Mouse
Immunogen	Synthetic peptide of human AVEN
Host	Rabbit
Isotype	IgG
Purification	Affinity purification
Conjugation	Unconjugated
Formulation	PBS with 0.05% sodium azide and 50% glycerol, PH7.4

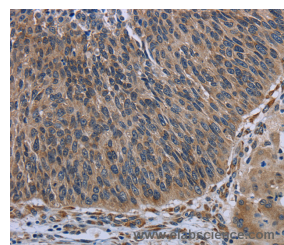
Applications Recommended Dilution

WB	1:500-1:2000
IHC	1:25-1:100

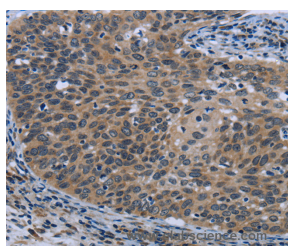
Data



Western Blot analysis of Raji and Hela cell using AVEN Polyclonal Antibody at dilution of 1:200
Calculated Mw:39kDa



Immunohistochemistry of paraffin-embedded Human lung cancer using AVEN Polyclonal Antibody at dilution of 1:30



Immunohistochemistry of paraffin-embedded Human cervical cancer using AVEN Polyclonal Antibody at dilution of 1:30

Preparation & Storage

Storage Store at -20°C. Avoid freeze / thaw cycles.

Background

AVEN, a cell death regulator, is an important signal inducer in acute leukemia. AVEN is a highly conserved peripheral membrane protein that protects the cell against the proteolytic activation of caspases as well as Apaf-1 mediated apoptosis by interfering with Apaf-1's ability to self-associate. Bcl-2 and Bad also interact with AVEN to prevent apoptosis. AVEN is highly expressed in ovary, heart, thymus, spleen, testis and colon, but can also be detected in other tissues.

For Research Use Only

A Reliable Research Partner in Life Science and Medicine

Toll-free: 1-888-852-8623

Web: www.elabscience.com

Tel: 1-832-243-6086

Email: techsupport@elabscience.com

Fax: 1-832-243-6017

AVEN Polyclonal Antibody

Catalog Number: E-AB-15518



Erythropoietin and methylprednisolone may play important roles in the expression of AVEN in cardiac tissue, especially after a traumatic brain injury. In young patients suffering from acute lymphoblastic leukemia (ALL), AVEN expression may be a useful tool in prognosis prediction.

For Research Use Only

A Reliable Research Partner in Life Science and Medicine

Toll-free: 1-888-852-8623

Tel: 1-832-243-6086

Fax: 1-832-243-6017

Web: www.elabscience.com

Email: techsupport@elabscience.com