

## HO1/HMOX1 Polyclonal Antibody

**catalog number: AN000380P**

**Note:** Centrifuge before opening to ensure complete recovery of vial contents.

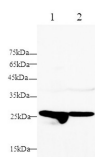
### Description

<b>Reactivity</b>	Human;Mouse
<b>Immunogen</b>	Recombinant Human HO1/HMOX1 protein expressed by E.coli
<b>Host</b>	Rabbit
<b>Isotype</b>	Rabbit IgG
<b>Purification</b>	Antigen Affinity Purification
<b>Buffer</b>	Phosphate buffered solution, pH 7.2, containing 0.05% Proclin300.

### Applications

Applications	Recommended Dilution
<b>WB</b>	1:500-1:1000
<b>IHC</b>	1:500-1:1000
<b>ELISA Capture</b>	2-8 µg/mL
<b>ELISA Detector</b>	0.1-0.4 µg/mL

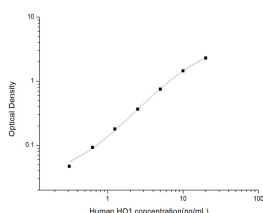
### Data



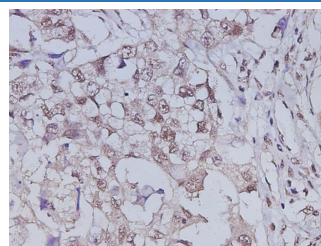
Western Blot with HO1 Polyclonal Antibody at dilution of 1:500. Lane 1: A549 cell lysate, Lane 2: NIH-3T3 cell lysate

**Observed-MW: 25 kDa**

**Calculated-MW: 33 kDa**



Sandwich ELISA-Recombinant Human HO1/HMOX1 protein standard curve. Background subtracted standard curve using HO1/HMOX1 antibody (AN000380P) (Capture), HO1/HMOX1 antibody (AN000380P) (Detector) in sandwich ELISA. The reference range value for Recombinant Human HO1/HMOX1 protein is 0.31-20 ng/mL.



Immunohistochemistry of paraffin-embedded Human breast cancer using HO1 Polyclonal Antibody at dilution of 1:1000

### Preparation & Storage

<b>Storage</b>	Store at 4°C valid for 12 months or -20°C valid for long term storage, avoid freeze / thaw cycles.
----------------	--

### For Research Use Only

**Shipping**

The product is shipped with ice pack, upon receipt, store it immediately at the temperature recommended.

**Background**

Heme Oxygenase (HO), also known as HMOX, is the rate limiting enzyme in the breakdown of heme into Biliverdin, CO, and iron. There are two major isoforms of this enzyme, HO-1 and HO-2. Both have similar enzymatic activity, however, HO-1 is rapidly inducible, while HO-2 is constitutively expressed. Inducers of HO-1 include cell stressors such as oxidative stress, infection, hypoxia, and cytotoxic agents. The reaction products generated by HO-1 activity are biologically active, and the enzyme has a broad range of putative roles. For instance, Biliverdin is an antioxidant with cytoprotective and anti-inflammatory properties, and CO has the potential to suppress inflammation and apoptosis. Because of these activities, HO-1 has received much attention as a therapeutic target for a range of pathological processes.

**For Research Use Only**

Toll-free: 1-888-852-8623

Web: [www.elabscience.com](http://www.elabscience.com)

Tel: 1-832-243-6086

Email: [techsupport@elabscience.com](mailto:techsupport@elabscience.com)

Fax: 1-832-243-6017

Rev. V1.9