

# CK-7 Monoclonal Antibody

Catalog Number: E-AB-22017 1 Publications



**Note:** Centrifuge before opening to ensure complete recovery of vial contents.

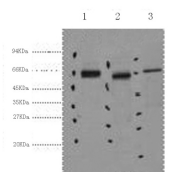
## Description

<b>Reactivity</b>	Human, Mouse, Rat
<b>Immunogen</b>	Synthetic Peptide
<b>Host</b>	Mouse
<b>Isotype</b>	IgG
<b>Clone</b>	Clone: 2B5
<b>Purification</b>	Protein A purification
<b>Conjugation</b>	Unconjugated
<b>Formulation</b>	PBS with 0.02% sodium azide and 50% glycerol pH 7.4.

## Applications Recommended Dilution

<b>WB</b>	1:1000-2000
<b>IHC</b>	1:100-1:300
<b>IF</b>	1:50-1:200

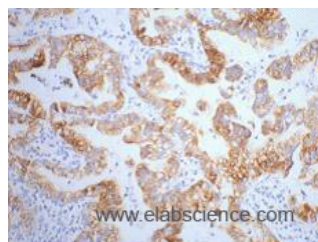
## Data



www.elabscience.com

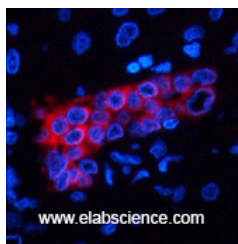
Western Blot analysis of 1) HeLa, 2) Mouse kidney, 3) Mouse brain using CK-7 Monoclonal Antibody at dilution of 1:2000.

**Observed MW: 54kDa**  
**Calculated Mw: 51kDa**



www.elabscience.com

Immunohistochemistry of paraffin-embedded Human lung cancer tissue using CK-7 Monoclonal Antibody at dilution of 1:200.



www.elabscience.com

Immunofluorescence analysis of Human liver tissue using CK-7 Monoclonal Antibody at dilution of 1:200.

## Preparation & Storage

**Storage** Store at -20°C. Avoid freeze / thaw cycles.

## For Research Use Only

A Reliable Research Partner in Life Science and Medicine

Toll-free: 1-888-852-8623

Web: [www.elabscience.com](http://www.elabscience.com)

Tel: 1-832-243-6086

Email: [techsupport@elabscience.com](mailto:techsupport@elabscience.com)

Fax: 1-832-243-6017

# CK-7 Monoclonal Antibody

Catalog Number: E-AB-22017

1 Publications



## Background

Blocks interferon-dependent interphase and stimulates DNA synthesis in cells. Involved in the translational regulation of the human papillomavirus type 16 E7 mRNA (HPV16 E7).

## For Research Use Only

A Reliable Research Partner in Life Science and Medicine

Toll-free: 1-888-852-8623

Web: [www.elabscience.com](http://www.elabscience.com)

Tel: 1-832-243-6086

Email: [techsupport@elabscience.com](mailto:techsupport@elabscience.com)

Fax: 1-832-243-6017