

Recombinant Human ILT6/LILRA3 Protein (His Tag)

Catalog Number: PDMH100137

Note: Centrifuge before opening to ensure complete recovery of vial contents.

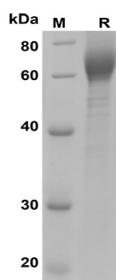
Description

Species	Human
Source	Mammalian-derived Human ILT6;LILRA3 protein Met1-Glu439, with an C-terminal His
Calculated MW	48.2 kDa
Observed MW	60-65 kDa
Accession	Q8N6C8
Bio-activity	Not validated for activity

Properties

Purity	> 90% as determined by reducing SDS-PAGE.
Endotoxin	< 1.0 EU/mg of the protein as determined by the LAL method
Storage	Generally, lyophilized proteins are stable for up to 12 months when stored at -20 to -80°C. Reconstituted protein solution can be stored at 4-8°C for 2-7 days. Aliquots of reconstituted samples are stable at < -20°C for 3 months.
Shipping	This product is provided as lyophilized powder which is shipped with ice packs.
Formulation	Lyophilized from a 0.2 µm filtered solution in PBS with 5% Trehalose and 5% Mannitol.
Reconstitution	It is recommended that sterile water be added to the vial to prepare a stock solution of 0.5 mg/mL. Concentration is measured by UV-Vis.

Data



SDS-PAGE analysis of Human ILT6/LILRA3 proteins, 2 µg/lane of Recombinant Human ILT6/LILRA3 proteins was resolved with SDS-PAGE under reducing conditions, showing bands at 60-65 kDa.

Background

Leukocyte immunoglobulin-like receptor subfamily A member 3 is also known as CD85 antigen-like family member E, Immunoglobulin-like transcript 6, ILT-6, Leukocyte immunoglobulin-like receptor 4, LIR-4 and Monocyte inhibitory receptor HM43/HM31. In humans, it is encoded by the LILRA3 gene. It acts as soluble receptor for class I MHC antigens. Binds both classical and non-classical HLA class I molecules but with reduced affinities compared to LILRB1 or LILRB2. It is detected in B-cells, natural killer (NK) cells, peripheral blood monocytes and lung.

For Research Use Only

Toll-free: 1-888-852-8623
Web: www.elabscience.com

Tel: 1-832-243-6086
Email: techsupport@elabscience.com

Fax: 1-832-243-6017